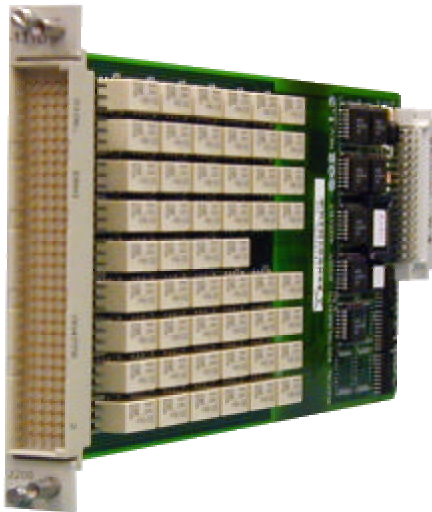


1260 VXI SWITCHING CARD

1260-131 1X4 MULTIPLEXER PLUG-IN

PUBLICATION NO. 980824-131



RACAL INSTRUMENTS

Racal Instruments, Inc.

4 Goodyear St., Irvine, CA 92618-2002
Tel: (800) RACAL-ATE, (800) 722-2528, (949) 859-8999;
FAX: (949) 859-7139

Racal Instruments, Ltd.

480 Bath Road, Slough, Berkshire, SL1 6BE, United Kingdom
Tel: +44 (0) 1628 604455; FAX: +44 (0) 1628 662017

Racal Systems Electronique S.A.

18 Avenue Dutartre, 78150 LeChesnay, France
Tel: +33 (1) 3923 2222; FAX: +33 (1) 3923 2225

Racal Systems Elettronica s.r.l.

Strada 2-Palazzo C4, 20090 Milanofiori Assago, Milan, Italy
Tel: +39 (0)2 5750 1796; FAX +39 (0)2 5750 1828

Racal Elektronik System GmbH.

Technologiepark Bergisch Gladbach, Friedrich-Ebert-Strasse,
D-51429 Bergisch Gladbach, Germany
Tel.: +49 2204 8442 00; FAX: +49 2204 8442 19

Racal Instruments, Ltd.

Unit 5, 25F., Mega Trade Center, No 1, Mei Wan Road, Tsuen Wan,
Hong Kong, PRC Tel: +852 2405 5500, FAX: +852 2416 4335

<http://www.racalstruments.com>

PUBLICATION DATE: April 25, 2002

Copyright 2002 by Racal Instruments, Inc. Printed in the United States of America. All rights reserved.
This book or parts thereof may not be reproduced in any form without written permission of the publisher.

WARRANTY STATEMENT

All Racal Instruments, Inc. products are designed and manufactured to exacting standards and in full conformance to Racal's ISO 9001 procedures.

For the specific terms of your standard warranty, or optional extended warranty or service agreement, contact your Racal customer service advisor. Please have the following information available to facilitate service.

1. Product serial number
2. Product model number
3. Your company and contact information

You may contact your customer service advisor by:

E-Mail:	Helpdesk@racalstruments.com	
Telephone:	+1 800 722 3262	(USA)
	+44(0) 8706 080134	(UK)
	+852 2405 5500	(Hong Kong)
Fax:	+1 949 859 7309	(USA)
	+44(0) 1628 662017	(UK)
	+852 2416 4335	(Hong Kong)

RETURN of PRODUCT

Authorization is required from Racal Instruments before you send us your product for service or calibration. Call your nearest Racal Instruments support facility. A list is located on the last page of this manual. If you are unsure where to call, contact Racal Instruments, Inc. Customer Support Department in Irvine, California, USA at 1-800-722-3262 or 1-949-859-8999 or via fax at 1-949-859-7139. We can be reached at: helpdesk@racalstruments.com.

PROPRIETARY NOTICE

This document and the technical data herein disclosed, are proprietary to Racal Instruments, and shall not, without express written permission of Racal Instruments, be used, in whole or in part to solicit quotations from a competitive source or used for manufacture by anyone other than Racal Instruments. The information herein has been developed at private expense, and may only be used for operation and maintenance reference purposes or for purposes of engineering evaluation and incorporation into technical specifications and other documents which specify procurement of products from Racal Instruments.

Racal Instruments

EC Declaration of Conformity

We

Racal Instruments Inc.
4 Goodyear Street
Irvine, CA 92718

declare under sole responsibility that the

1260-131A Multiplexer Plug In Module P/N 407812-001
1260-131B Multiplexer Plug In Module P/N 407812-002

conform to the following Product Specifications:

Safety: EN 61010-1:1993+A2:1995

EMC: EN61326:1997+A1:1998

Supplementary Information:

The above specifications are met when the product is installed in a Racal Instruments certified mainframe with faceplates installed over all unused slots, as applicable.

The product herewith complies with the requirements of the Low Voltage Directive 73/23/EEC and the EMC Directive 89/336/EEC.

Irvine, CA, April 10, 2002



Karen Evensen, Engineering Director

FOR YOUR SAFETY

Before undertaking any troubleshooting, maintenance or exploratory procedure, read carefully the **WARNINGS** and **CAUTION** notices.



CAUTION
RISK OF ELECTRICAL SHOCK
DO NOT OPEN



This equipment contains voltage hazardous to human life and safety, and is capable of inflicting personal injury.



If this instrument is to be powered from the AC line (mains) through an autotransformer, ensure the common connector is connected to the neutral (earth pole) of the power supply.



Before operating the unit, ensure the conductor (green wire) is connected to the ground (earth) conductor of the power outlet. Do not use a two-conductor extension cord or a three-prong/two-prong adapter. This will defeat the protective feature of the third conductor in the power cord.



Maintenance and calibration procedures sometimes call for operation of the unit with power applied and protective covers removed. Read the procedures and heed warnings to avoid “live” circuit points.

Before operating this instrument:

1. Ensure the proper fuse is in place for the power source to operate.
2. Ensure all other devices connected to or in proximity to this instrument are properly grounded or connected to the protective third-wire earth ground.

If the instrument:

- fails to operate satisfactorily
- shows visible damage
- has been stored under unfavorable conditions
- has sustained stress

Do not operate until, performance is checked by qualified personnel.

This page was left intentionally blank.

Table of Contents

Chapter 1	
SPECIFICATIONS	1-1
Introduction.....	1-1
Specifications	1-2
Power Dissipation.....	1-3
About MTBF	1-5
Ordering Information	1-6
Chapter 2	
INSTALLATION INSTRUCTIONS	2-1
Unpacking and Inspection.....	2-1
Reshipment Instructions	2-1
Installation.....	2-1
Module Configuration	2-2
Front Panel Connectors.....	2-5
Mating Connectors.....	2-9
Chapter 3	
MODULE OPERATION.....	3-1
Command Set	3-1
Operating In Message-Based Mode.....	3-1
Channel Descriptors For The 1260-131	3-1
Reply To The MOD:LIST? Command.....	3-2
Operating The 1260-131 in Register-Based Mode.....	3-3
1260-131 Example Code	3-6
Chapter 4	
DRAWINGS.....	4-1
Chapter 5	
PARTS LIST	5-1
Chapter 6	
OPTIONAL ASSEMBLIES.....	6-1

Chapter 7

PRODUCT SUPPORT 7-1

 Product Support 7-1

 Reshipment Instructions 7-1

 Support Offices 7-2

List of Figures

Figure 1-1, The 1260-131B..... 1-1

Figure 2-1, 1260-131B Block Diagram, 26 - 1x4 Mux's 2-3

Figure 2-2, 1260-131A Block Diagram, 10-1X4 Mux's..... 2-4

Figure 2-3, 1260-131B Front-Panel Connector Pin Numbering..... 2-5

Figure 2-4, 1260-131A Front-Panel Connector Pin Numbering..... 2-6

Chapter 1

SPECIFICATIONS

Introduction

The 1260-131 is a 1X4 Multiplexer plug-in switch module for the Racal Instruments 1260-100 Adapt-a-Switch Carrier and the 1256 Switching System. The 1260-131 is available in two models:

- 1260-131A, 10-1X4 Multiplexer with 64 pin DIN connector.
- 1260-131B, 26-1X4 Multiplexer with High Density, 160 pin connector.

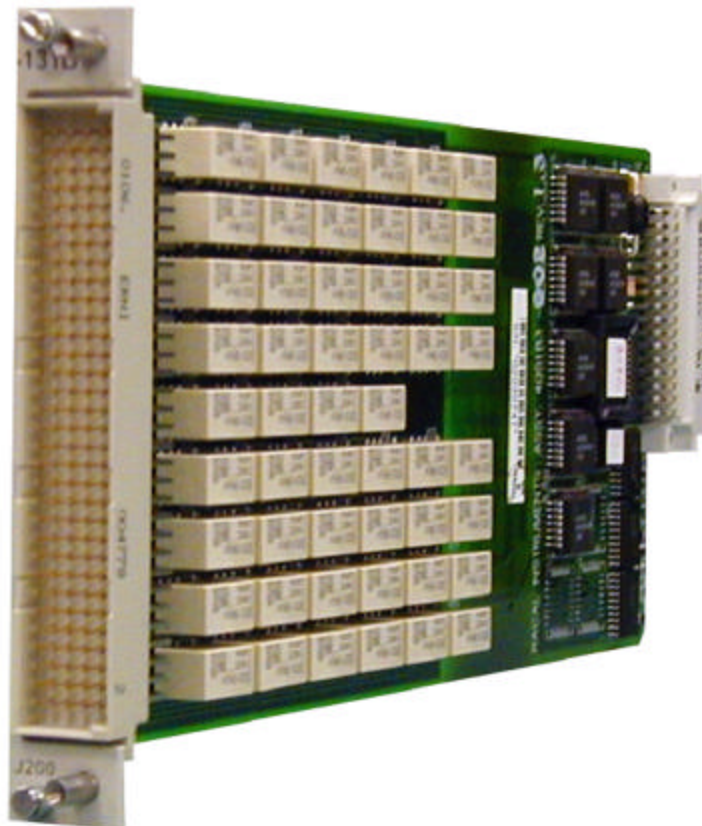


Figure 1-1, The 1260-131B

Specifications

Bandwidth (-3dB, 50Ω)	200 MHz
Insertion Loss (50Ω)	
1MHz	≤ 0.1dB
10 MHz	≤ 0.2dB
Isolation (50Ω)	
1MHz	≥ 60dB
10MHz	≥ 40dB
Crosstalk (50Ω)	
1MHz	≤ -60dB
10MHz	≤ -40dB
Switching Voltage	
AC	250V, Max
DC	220V, Max
Switching Current	
AC	2A, Max, (1A Max 1260-131A)
DC	2A, Max, (1A Max 1260-131A)
Switching Power	
AC	125VA, Max
DC	60W, Max 1260-131B 30W, Max 1260-131A
Initial Path resistance	≤ 400mΩ
Thermal EMF	≤ 6uV
Capacitance	
Channel-Chassis	≤ 60pF
Open-Channel	≤ 5pF
Insulation resistance	> 10 ⁹ Ω
Relay Settling Time	≤ 5ms
Shock	30g, 11 ms, ½ sine wave
Vibration	0.013 in. P-P, 5-55 Hz
Bench Handling	4 in., 45°

Cooling	
Adapt-A-Switch:	3 liters/sec at 0.7mm H ₂ O
1256:	Maximum Power Dissipation based on 1256 "Signal Switch Plug-in Deratings
Temperature	
Operating	0°C to +55°C
Non-operating	-40°C to +75°C
Relative Humidity	85% ± 5% non-condensing at ≤ 30°C
Altitude	
Operating	10,000 feet
Non-operating	15,000 feet
Power Requirements	+5 VDC at 150mA plus 30mA per energized relay ≤ 1.7Amps
Weight	9oz. (260g) 1260-131B 6oz (170g) 1260-131A
MTBF	822,885 hours (MIL-HDBK-217E) (Excluding Relays)
Dimensions	4.5" H x 0.75" W x 9.5" D

Power Dissipation

While the cooling of the Adapt-a-Switch carrier is dependent upon the chassis into which it is installed, the carrier can normally dissipate approximately 100 W. Care must be taken, then, in the selection and loading of the plug-in modules used in the carrier. It is not possible to fully load the carrier, energize every relay, and run full power through every set of contacts, all at the same time. In practice this situation would never occur.

To properly evaluate the power dissipation of the plug-in modules, examine the path resistance, the current passing through the relay contacts, the ambient temperature, and the number of relays closed at any one time.

For example, if a 1260-131B module (containing 52 relays) has 26 relays closed, passing a current of 0.5 A, then:

Total power dissipation =
 $[(\text{current})^2 * (\text{path resistance}) * 26] + [:\text{Coil}$
 $\text{Power} * 26] + (\text{quiescent power})$

By substituting the actual values:

Total power dissipation =
 $[(0.5 \text{ A})^2 * (.4\Omega) * 26] + [.15\text{W} * 26] + (0.75 \text{ W}) = 7.25\text{W}$ at
 55°C

This is acceptable power dissipation for an individual plug-in module. If five additional modules are likewise loaded, then the overall carrier dissipation is approximately 45 W, which is well within the cooling available in any commercial VXIbus chassis. In practice, rarely are more than 25% of the module's relays energized simultaneously, and rarely is full rated current run through every path. In addition, the actual contact resistance is typically one-half to one-fourth the specified maximum, and temperatures are normally not at the rated maximum. The power dissipated by each plug-in should be no more than 16W if all six slots are used simultaneously. This yields the following guideline:

0.5 A	Max. 26 paths
1.0 A	Max. 20 paths
2.0 A	Max. 8 paths

Most users of a signal-type switch, such as the 1260-131, switch no more than a few hundred milliamperes and are able to energize all relays simultaneously, should they so desire. The numbers in the above table represent worst-case, elevated-temperature, end-of-life conditions and 100% duty cycle.

Additionally, if fewer plug-in modules are used, more power may be dissipated by the remaining cards. By using a chassis with high cooling capacity, such as the Racal Instruments 1261B, almost any configuration may be realized.

For the 1256 Chassis, the user should follow the "Signal Switch Plug-in" de-rating guidelines. In general, if switching the max rated current, 2 Amps, for a 1260-131B, a 25% max channel use (6 Channels) limitation is imposed to keep heat dissipation limited. If running at less than .5 Amp, there is no limitation on the maximum number of channels used.

About MTBF

The 1260-131 MTBF is 822,885 hours, calculated in accordance with MIL-HDBK-217E, with the exception of the electromechanical relays. Relays are excluded from this calculation because relay life is strongly dependent upon operating conditions. Factors affecting relay life expectancy are:

1. Switched voltage
2. Switched current
3. Switched power
4. Maximum switching capacity
5. Maximum rated carrying current
6. Load type (resistive, inductive, capacitive)
7. Switching repetition rate
8. Ambient temperature

The most important factor is the maximum switching capacity, which is an interrelationship of maximum switching power, maximum switching voltage and maximum switching current. When a relay operates at a lower percentage of its maximum switching capacity, its life expectancy is longer. The maximum switching capacity specification is based on a resistive load, and must be further de-rated for inductive and capacitive loads.

For more details about the above life expectancy factors, refer to the data sheet for the switch plug-in module.

The relay used on the 1260-131 plug-in is Racal part no. 310256-001. The relay manufacturer's specifications for this relay are:

Life Expectancy	
Mechanical	100,000,000 operations
Electrical	100,000 operations at 60 W / 62.5 VA

For additional relay specifications, refer to the relay manufacturer's data sheet.

<u>Vendor</u>	<u>Part Number</u>
Aromat	TX2SS-5V
Siemens	V23079G1001B201

Ordering Information

Listed below are part numbers for both the 1260-131 switch module and available mating connector accessories. Each 1260-131 uses a single mating connector.

ITEM	DESCRIPTION	PART #
1260-131A Switch Module	Switch Module, 10 (1X4) Mux Plug-in	407812-001
1260-131B Switch Module	Switch Module, 26 (1X4) Mux Plug-in	407812-002
IDC Connector	64 Pin DIN Connector, IDC (-131A)	602004
Crimp Connector	64 Pin DIN Crimp Body (-131A)	602159-064
Crimp Pin	64 Pin DIN crimp Pin (-131A)	602159-900
Connector Kit	160 Pin Conn. Kit (-131B)	407664
Interface Cable	6 Ft, 160 Pin Cable (-131B)	407408-001
Additional Manual	131 User's Manual	980824-131

INSTALLATION INSTRUCTIONS

Unpacking and Inspection



1. Before unpacking the switching module, check the exterior of the shipping carton for any signs of damage. All irregularities should be noted on the shipping bill and reported.

CAUTION

ESD sensitive devices, open the instrument at an ESD safe work station.

2. Remove the instrument from its carton, preserving the factory packaging as much as possible.
3. Inspect the switching module for any defects or damage. Immediately notify the carrier if any damage is apparent.
4. Have a qualified person check the instrument for safety before use.

Reshipment Instructions

1. Use the original packing material when returning the switching module to Racal Instruments for servicing. The original shipping carton and the instrument's plastic foam will provide the necessary support for safe reshipment.
2. If the original packing material is unavailable, wrap the switching module in an ESD Shielding bag and use adequate packing materials to surround and protect the instrument.
3. Reship in either the original or a new shipping carton.

Installation

Installation of the 1260-131 Switching Module into a 1260-100 Carrier assembly is described in the Installation section of the 1260-100 Adapt-a-Switch Carrier Manual.

Installation of the 1260-131 Switching Module into a 1256 Switching System is described in the installation section of the 1256 User Manual.

Module Configuration

The 1260-131 is a 1X4 Multiplexer, single-wire plug-in for the Adapt-a-Switch and 1256 Series. Its relay architecture permits it to be organized via software into many configurations. These configurations are equivalent to a 1-wire, 2-wire, ... n-wire 1X4 Multiplexers. The software command *Include* provides this flexibility without the use of hardware jumpers.

Other types of configurations are possible by using jumpers at the front-panel connectors. The user can thus configure the module as a 1X16 Multiplexer up to a 1X64 Multiplexer.

Figure 2-1 shows a block diagram of the 1260-131. **Figure 2-2** shows the pin numbering for the front-panel connector. For connector pin assignments, refer to **Table 2-1**.

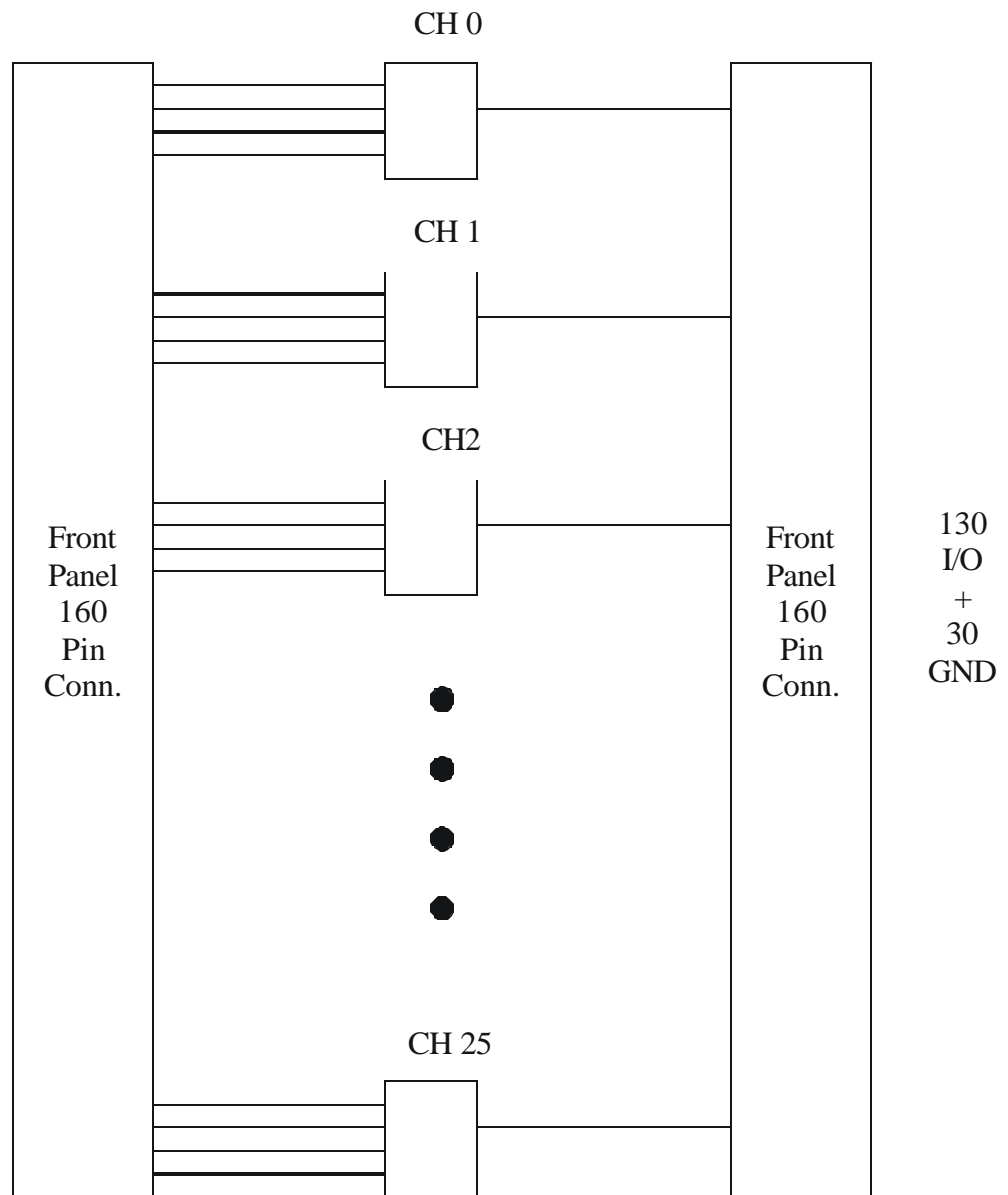
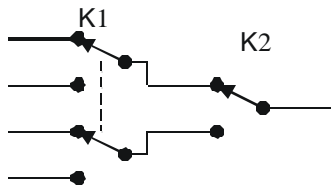


Figure 2-1, 1260-131B Block Diagram, 26 - 1x4 Mux's

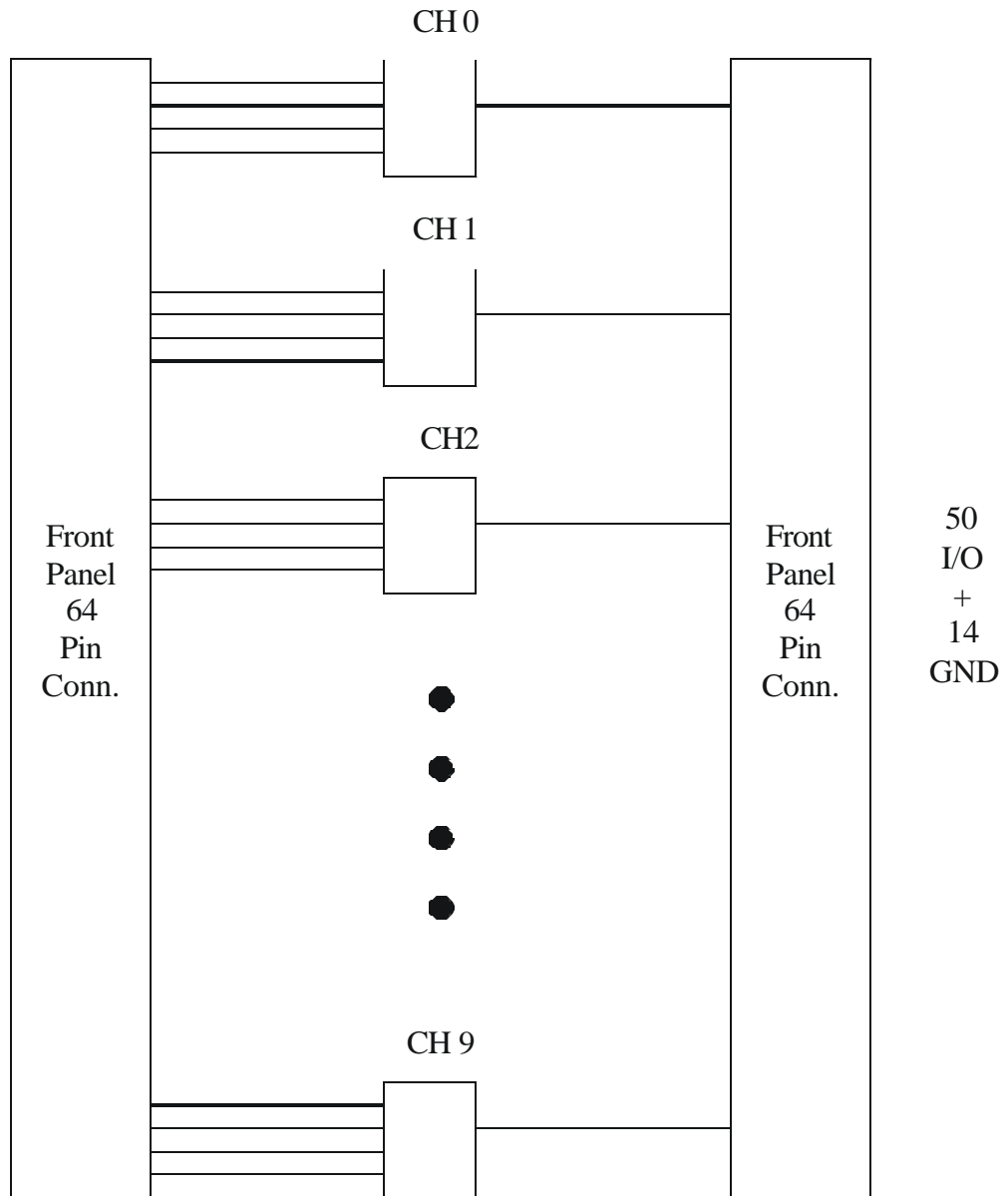
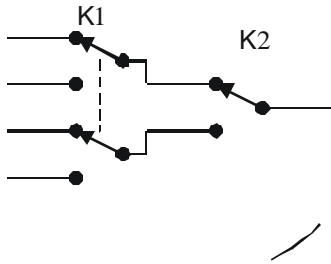


Figure 2-2, 1260-131A Block Diagram, 10-1X4 Mux's

Front Panel Connectors

The 1260-131B has one 160-pin front-panel connector, labeled J200. It is a 160-pin, modified DIN style, with 0.025" square posts as pins. It has one pin for each of the four inputs and one for each output. See **Figure 2-1** for 1260-131B Block Diagram.

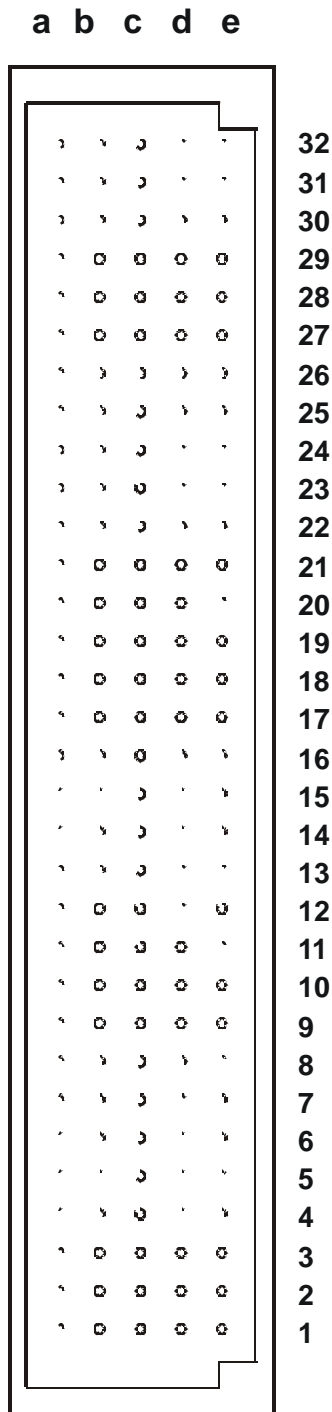


Figure 2-3, 1260-131B Front-Panel Connector Pin Numbering

The 1260-131A has one 64-pin front panel connector labeled J200. It is a 64-pin DIN style with .025' square posts as pins. See **Figure 2-2** for the 1260-131A Block Diagram.

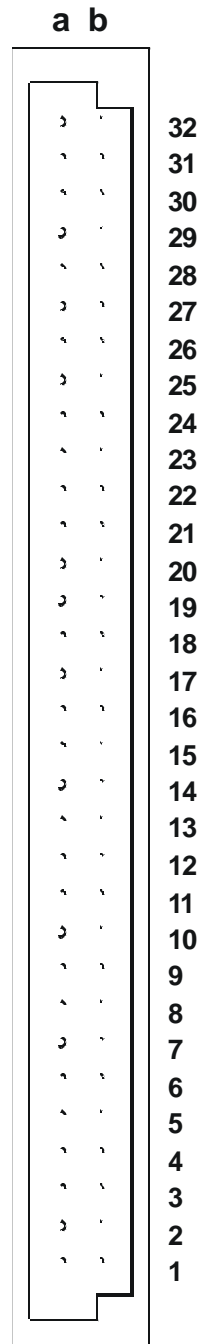


Figure 2-4, 1260-131A Front-Panel Connector Pin Numbering

Table 2-1 shows the mapping of channel numbers to connector pins for both models. Information about available mating connectors is provided immediately after **Table 2-1**.

Table 2-1, Channel to Connector Pin Mapping

Relay	Relay	Channel Number	IN	Common	OUT
K1 off	K2 off	000	J200-A3	0	J200-B1
K1 on	K2 off	001	J200-A4		
K1 on	K2 on	002	J200-B2		
K1 off	K2 on	003	J200-A2		
K3 off	K4 off	010	J200-A6	1	J200-B4
K3 on	K4 off	011	J200-A7		
K3 on	K4 on	012	J200-B5		
K3 off	K4 on	013	J200-A5		
K5 off	K6 off	020	J200-A10	2	J200-A9
K5 on	K6 off	021	J200-B8		
K5 on	K6 on	022	J200-A8		
K5 off	K6 on	023	J200-B7		
K7 off	K8 off	030	J200-A13	3	J200-B10
K7 on	K8 off	031	J200-B13		
K7 on	K8 on	032	J200-B11		
K7 off	K8 on	033	J200-A11		
K9 off	K10 off	040	J200-B14	4	J200-B16
K9 on	K10 off	041	J200-A16		
K9 on	K10 on	042	J200-A15		
K9 off	K10 on	043	J200-A14		
K11 off	K12 off	050	J200-B19	5	J200-B17
K11 on	K12 off	051	J200-A17		
K11 on	K12 on	052	J200-A18		
K11 off	K12 on	053	J200-A19		
K13 off	K14 off	060	J200-A20	6	J200-B23
K13 on	K14 off	061	J200-B20		
K13 on	K14 on	062	J200-B22		
K13 off	K14 on	063	J200-A22		
K15 off	K16 off	070	J200-A23	7	J200-A24
K15 on	K16 off	071	J200-B25		
K15 on	K16 on	072	J200-A25		
K15 off	K16 on	073	J200-B26		
K17 off	K18 off	080	J200-A27	8	J200-B29
K17 on	K18 off	081	J200-A26		
K17 on	K18 on	082	J200-B28		
K17 off	K18 on	083	J200-A28		
K19 off	K20 off	090	J200-A30	9	J200-B32
K19 on	K20 off	091	J200-A29		
K19 on	K20 on	092	J200-B31		
K19 off	K20 on	093	J200-A31		
K21 off	K22 off	100	J200-E2	10	J200-D2
K21 on	K22 off	101	J200-C3		
K21 on	K22 on	102	J200-D1		
K21 off	K22 on	103	J200-C2		
K23 off	K24 off	110	J200-D4	11	J200-E4
K23 on	K24 off	111	J200-C5		
K23 on	K24 on	112	J200-E3		
K23 off	K24 on	113	J200-C4		

Relay	Relay	Channel Number	IN	Common	OUT
K25 off	K26 off	120	J200-C6	12	J200-C7
K25 on	K26 off	121	J200-E6		
K25 on	K26 on	122	J200-E5		
K25 off	K26 on	123	J200-D5		
K27 off	K28 off	130	J200-D8	13	J200-D7
K27 on	K28 off	131	J200-C8		
K27 on	K28 on	132	J200-E8		
K27 off	K28 on	133	J200-E7		
K29 off	K30 off	140	J200-D10	14	J200-E9
K29 on	K30 off	141	J200-E10		
K29 on	K30 on	142	J200-C9		
K29 off	K30 on	143	J200-C10		
K31 off	K32 off	150	J200-C12	15	J200-D11
K31 on	K32 off	151	J200-C13		
K31 on	K32 on	152	J200-C11		
K31 off	K32 on	153	J200-E11		
K33 off	K34 off	160	J200-E13	16	J200-E14
K33 on	K34 off	161	J200-D14		
K33 on	K34 on	162	J200-D13		
K33 off	K34 on	163	J200-C14		
K35 off	K36 off	170	J200-C16	17	J200-C15
K35 on	K36 off	171	J200-E16		
K35 on	K36 on	172	J200-E15		
K35 off	K36 on	173	J200-D16		
K37 off	K38 off	180	J200-E18	18	J200-D17
K37 on	K38 off	181	J200-E17		
K37 on	K38 on	182	J200-C18		
K37 off	K38 on	183	J200-C17		
K39 off	K40 off	190	J200-E20	19	J200-E19
K39 on	K40 off	191	J200-C19		
K39 on	K40 on	192	J200-D19		
K39 off	K40 on	193	J200-D20		
K41 off	K42 off	200	J200-C21	20	J200-D22
K41 on	K42 off	201	J200-C20		
K41 on	K42 on	202	J200-C22		
K41 off	K42 on	203	J200-E22		
K43 off	K44 off	210	J200-D23	21	J200-E24
K43 on	K44 off	211	J200-E23		
K43 on	K44 on	212	J200-C24		
K43 off	K44 on	213	J200-C23		
K45 off	K46 off	220	J200-D25	22	J200-D26
K45 on	K46 off	221	J200-C25		
K45 on	K46 on	222	J200-E25		
K45 off	K46 on	223	J200-E26		
K47 off	K48 off	230	J200-C27	23	J200-C26
K47 on	K48 off	231	J200-E27		
K47 on	K48 on	232	J200-E28		
K47 off	K48 on	233	J200-D28		
K49 off	K50 off	240	J200-D29	24	J200-E29
K49 on	K50 off	241	J200-C28		
K49 on	K50 on	242	J200-E30		
K49 off	K50 on	243	J200-C29		
K51 off	K52 off	250	J200-E31	25	J200-D31
K51 on	K52 off	251	J200-C30		
K51 on	K52 on	252	J200-D32		
K51 off	K52 on	253	J200-C31		

Note: Multiplexers 10-25 are **not** available on Model 1260-131A

Mating Connectors

The following **1260-131B** mating connector accessories are available:

160-Pin Connector Kit with backshell and pins, P/N 407664

The 160-Pin Connector Kit consists of a connector housing, aluminum backshell, and 160 crimp pins. After wire attachment, the pin is inserted into the housing and will snap into place, providing positive retention.

160-Pin Cable Assembly, 6 Ft., 24 AWG, P/N 407408-001

The 160-Pin Cable Assembly uses 24 AWG cable with crimp pins to mate with the 1260-131B. The other cable end is unterminated. Refer to **Table 2-1** for channel-to-pin mapping information.

The suggested crimp hand tool is PN991020. The crimp pin insertion tool is P/N 990898. The corresponding pin removal tool is P/N 990899.

The following **1260-131A** mating connector accessories are available:

64-Pin DIN, IDC Connector P/N 602004

This connector is for use with flat ribbon cable. This allows an economical means of cable assembly.

64 Pin DIN Crimp Connector Body P/N 602159-064
64 Pin DIN Crimp Pin P/N 602159-900

The crimp connector and pins allow more flexibility and better performance than the IDC connector but, has additional cable assembly cost. The crimp hand tool is P/N 990897. The insertion tool is P/N 990898. The extraction tool is P/N 990899.

This page was left intentionally blank.

Command Set

The 1260-131 card uses the existing 1260 and 1256 Series switch card command set. All commands supported by other relay modules (such as CLOSE, OPEN, SCAN, EXCLUDE, INCLUDE) are supported.

The OPEN, CLOSE, EXCL, INCL, and SCAN commands all use relay descriptors to specify a single relay or a range of relays to operate.

Operating In Message-Based Mode

Channel Descriptors For The 1260-131

The standard 1260-01T commands are used to operate the 1260-131 module. These commands are described in the 1260-01T User's Manual.

Each 1260-01T relay command uses a *channel descriptor* to select the channel(s) of interest. The syntax for a channel descriptor is the same for all 1260 series modules. In general, the following syntax is used to select a single channel:

```
(@ <module address> ( <channel range> ) )
```

The 1260-131 relay descriptor identifies a relay, or range of relays, to be operated. The relay descriptor uses module-specific syntax to uniquely identify each relay on the module.

The relay descriptor for the 1260-131 has the form:

```
<relay descriptor> ::= (@<module address> (<channel range>))
```

```
<module address>    1 to 12 for the 1260-100 Carrier  
                    1 to 8 for the 1256 Switching System
```

```
<channel range>    ::= <channel number>:<channel number>|  
                       <channel number>,<channel number>|  
                       <channel number>
```

```
<Channel number> ::= <Mux><channel>
```

```
<Mux>              ::= 00 to 09 for 1260-131A
```

00 to 25 for 1260-131B

<channel> ::= 0 to 3

The default state of each multiplexer (26 plcs) with no relays energized is for channel 0 (of each multiplexer) to be connected to the common. Therefore, there exists an implied closure. For example, if channel 072 of module 1 is connected and the command is issued:

```
OPEN (@1(072))
```

The implied closure is for channel 070 of module 1 to be connected.

Also, if the following command is issued:

```
CLOSE (@1(070,071,072))
```

Channel 072 will be the only channel closed, since it is the last channel in the range within the same mux.

The following examples illustrate the use of the channel descriptors for the 1260-131:

```
OPEN (@8(002))      Open channel 2 of Mux 0 on the
                    1260-131 that has module address
                    8 (channel 000 is connected by
                    default).
```

```
CLOSE (@8(021,032)) Close channels 1 of Mux 2 and 2
                    of Mux 3 on the 1260-131 that has
                    module address 8.
```

Reply To The MOD:LIST? Command

The 1260-100 and 1256 return a reply to the MOD:LIST? command. This reply is unique for each different 1260 series switch module. The syntax for the reply is:

```
<module address> : <module-specific identification string>
```

The <module-specific identification string> for the 1260-131 is:

```
1260-131A 10 1X4 2A MUX
```

```
1260-131B 26 1X4 2A MUX
```

So, for a 1260-131 whose <module address> is set to 8, the reply to this query would be:

```
8 : 1260-131 26 1X4 2A MUX
```

Operating The 1260-131 in Register-Based Mode

In register-based mode, the 1260-131 is operated by directly writing and reading control registers on the 1260-131 module. The first control register on the module operates channels 0 through 7. The second control register operates channels 8 through 15. The third control register operates channels 16 through 19, etc. When a control register is written to, all channels controlled by that register are operated simultaneously.

The control registers are located in the VXIbus A24 Address Space. The A24 address for a control register depends on:

1. The A24 Address Offset assigned to the 1260-100 module by the Resource Manager program. The Resource Manager program is provided by the VXIbus slot-0 controller vendor. The A24 Address Offset is placed into the "Offset Register" of the 1260-01T by the Resource Manager.
2. The <module address> of the 1260-131 module. This is a value in the range from 1 and 12 inclusive for 1260-100, 1 and 8 for the 1256.
3. The 1260-131 control register to be written to or read from. Each control register on the 1260-131 has a unique address.

The base A24 address for the 1260-131 module may be calculated by:

$$(A24 \text{ Offset of the } 1260-01T) + (1024 \times \text{Module Address of } 1260-131).$$

The A24 address offset is usually expressed in hexadecimal. A typical value of 204000_{16} is used in the examples that follow.

A 1260-131 with a module address of 7 would have the base A24 address computed as follows:

$$\begin{aligned} \text{Base A24 Address of } 1260-131 &= 204000_{16} + (400_{16} \times 7_{10}) \\ &= 205C00_{16} \end{aligned}$$

The control registers for Adapt-a-Switch plug-ins and conventional 1260-Series modules are always on odd-numbered A24 addresses. The control registers for the 1260-131 reside at sequential odd-numbered A24 addresses for the module:

$$\begin{aligned} (\text{Base A24 Address of } 1260-131) + 1 &= \text{Control Register 0} \\ (\text{Base A24 Address of } 1260-131) + 3 &= \text{Control Register 1} \\ (\text{Base A24 Address of } 1260-131) + 5 &= \text{Control Register 2} \\ \dots, \text{ and so on.} \end{aligned}$$

So, for our example, the first control register is located at:

205C01 Control Register 0, controls channels 0 through 7

The second control register is located at:

205C03 Control Register 1, controls channels 8 through 15

Table 3-1 shows the relay assignments for each control register. Refer the **Table 2-1** for the relay to channel mapping.

Table 3-1, Control Register to Relay Assignments

Control Register	Channels							
	Bit 7 (MSB)	Bit 6	Bit 5	Bit 4	Bit 3	Bit 2	Bit 1	Bit 0 (LSB)
0	K8	K7	K6	K5	K4	K3	K2	K1
1	K16	K15	K14	K13	K12	K11	K10	K9
2	K24	K23	K22	K21	K20	K19	K18	K17
3	K32	K31	K30	K29	K28	K27	K26	K25
4	K40	K39	K38	K37	K36	K35	K34	K33
5	K48	K47	K46	K45	K44	K43	K42	K41
6	unused	unused	unused	unused	K52	K51	K50	K49

Setting a control bit to 1 closes the corresponding channel, and clearing the bit to zero opens the corresponding channel. Thus, if you write the value 1000 0101 binary = 133 decimal = 85 hexadecimal to Control Register 0, channels 0, 2, and 7 will close, while channels 1, 3, 4, 5, and 6 will open.

The present control register value may be read back by reading an 8-bit value from the control register address. **The value is inverted.** In other words, the eight-bit value read back is the one's complement of the value written.

If you want to change the state of a single relay without affecting the present state of the other relays controlled by the control register, you must:

1. Read the control register
2. Invert the bits (perform a one's complement on the register data)
3. Perform a bit-wise AND operation, leaving all but the

specific control register bit for the relay to change

4. **To open:** continue to step 5. **To close:** OR in the bit for the relay to close.
5. Write the modified value back to the control register.

For example, to close channel 13:

1. Read Control Register 1 (this register controls channels 8 through 15, with channel 8 represented by the LSB)
2. Invert the bits in the value read in step 1
3. AND with 1101 1111 binary (the zero is in the position corresponding to channel 13)
4. OR with 0010 0000 binary
5. Write the value to Control Register 1

The VISA I/O library may be used to control the module. The VISA function `viOut8()` is used to write a single 8-bit byte to a control register, while `viIn8()` is used to read a single 8-bit byte from the control register. The following code example shows the use of `viOut8()` to update the 1260-131 module.

1260-131 Example Code

```
#include <visa.h>

/* This example shows a 1260-01T at logical address 16 and a VXI/MXI */
/* interface */
#define RI1260_01_DESC      "VXI::16"

/* For a GPIB-VXI interface, and a logical address of 77 */
/* the descriptor would be: "GPIB-VXI::77" */

/* this example shows a 1260-131 with module address 7 */
#define MOD_ADDR_120  7

void example_operate_1260_131(void)
{
    ViUInt8  creg_val;
    ViBusAddress  creg0_addr;
    ViBusAddress  creg1_addr;
    ViBusAddress  creg2_addr;
    ViSession  hdl1260;    /* VISA handle to the 1260-01T */
    ViSession  hdlRM;      /* VISA handle to the resource manager */
    ViStatus  error;      /* VISA error code */

    /* open the resource manager */
    /* this must be done once in application program */
    error = viOpenDefaultRM (&hdlRM);

    if (error < 0) {
        /* error handling code goes here */
    }

    /* get a handle for the 1260-01T */
    error = viOpen (hdlRM, RI1260_01_DESC, VI_NULL,VI_NULL, &hdl1260);
    if (error < 0) {
        /* error handling code goes here */
    }

    /* form the offset for control register 0 */
```

```
/* note that the base A24 Address for the 1260-01T */
/* is already accounted for by VISA calls viIn8() and */
/* viOut8() */

    /* module address shifted 10 places = module address x 1024 */
    creg0_addr = (MOD_ADDR_131 << 10) + 1;
    creg1_addr = creg0_addr + 2;
    creg2_addr = creg1_addr + 2;

/* close relays 14 without affecting the state of */
/* relays 9, 10, 11, 12, 13, 15, and 16 */
error = viIn8 (hdl1260, VI_A24_SPACE, creg1_addr, &creg_val);
if (error < 0) {
    /* error handling code goes here */
}

/* invert the bits to get the present control register value */
creg_val = ~creg_val;

/* AND to leave every relay except 14 unchanged */
creg_val &= ~ (0x20);

/* OR in the bit to close relay 14 */
creg_val |= 0x20;

/* write the updated control register value */
error = viOut8 (hdl1260, VI_A24_SPACE, creg1_addr, creg_val);
if (error < 0) {
    /* error handling code goes here */
}

/* open relay 17 without affecting channels 18 through 24 */
error = viIn8 (hdl1260, VI_A24_SPACE, creg2_addr, &creg_val);
if (error < 0) {
    /* error handling code goes here */
}

/* invert the bits to get the present control register value */
creg_val = ~creg_val;

/* AND to leave every relay except 17 unchanged */
/* leave bit 0 clear to open relay 17 */
creg_val &= ~ (0x01);
```

```
/* write the updated control register value */
error = viOut8 (hdl1260, VI_A24_SPACE, creg2_addr, creg_val);
if (error < 0) {
    /* error handling code goes here */
}

/* close the VISA session */
error = viClose( hdl1260 );
if (error < 0) {
    /* error handling code goes here */
}
}
```

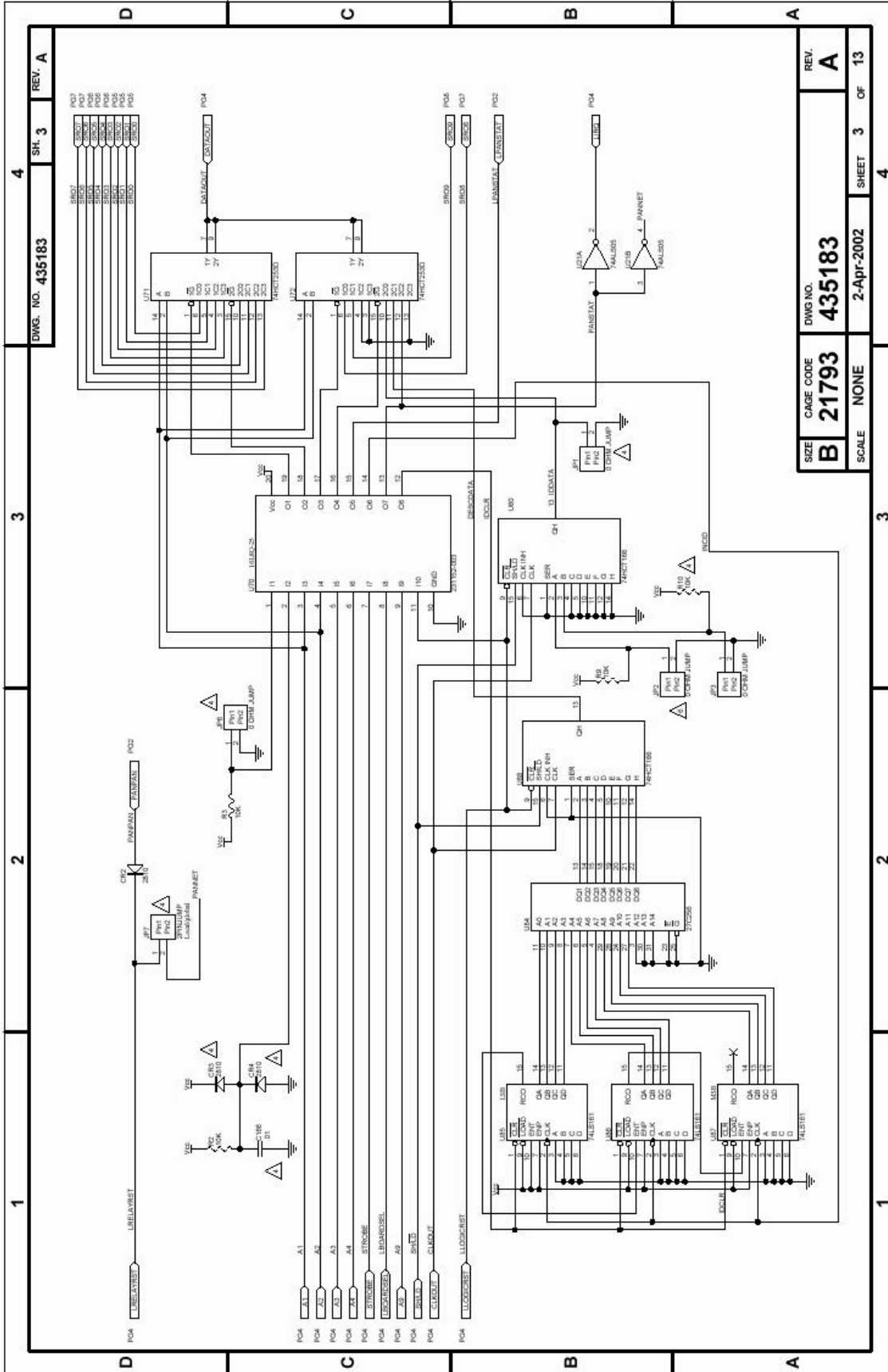

Chapter 4

DRAWINGS

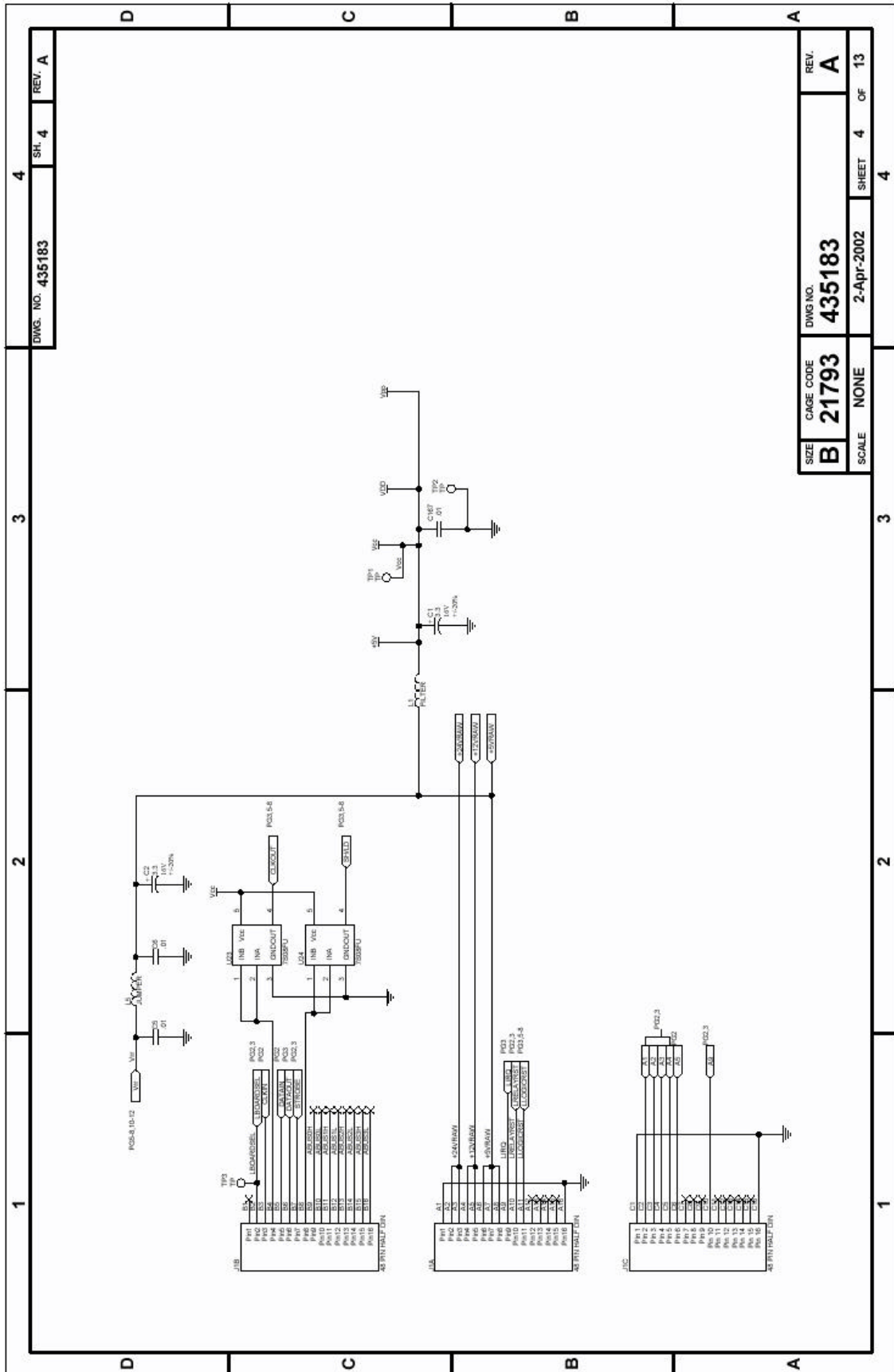
405183-001	PCB Assembly, 1260-131A.....	4-3
405183-002	PCB Assembly, 1260-131B	4-3
435183	Schematic, 1260-131	4-4

This page was left intentionally blank.

1	2	3	4																																																																																																																																																																																																																																																																																																																																																																																																																						
DWG. NO. 435183			REV. A																																																																																																																																																																																																																																																																																																																																																																																																																						
REVISIONS																																																																																																																																																																																																																																																																																																																																																																																																																									
REV	DESCRIPTION	DATE	APPROVED																																																																																																																																																																																																																																																																																																																																																																																																																						
A	DOCUMENT CONTROL RELEASE 020405	020402	DK																																																																																																																																																																																																																																																																																																																																																																																																																						
D																																																																																																																																																																																																																																																																																																																																																																																																																									
<p>NOTES:</p> <p>1. RESISTOR VALUES ARE IN OHMS, 1%TOL, 1/8W, UNLESS OTHERWISE SPECIFIED.</p> <p>2. CAPACITOR VALUES ARE IN MICROFARADS, 50V, 1/8W, UNLESS OTHERWISE SPECIFIED.</p> <p>3. RELAYS K1-K52 ARE RACAL INSTRUMENTS P/N 310226-001.</p> <p>△ COMPONENTS INDICATED ARE NOT INSTALLED.</p> <p>△ COMPONENTS INDICATED ARE NOT INSTALLED FOR P/N 435183-001.</p> <p>△ COMPONENTS INDICATED ARE NOT INSTALLED FOR P/N 435183-002.</p>																																																																																																																																																																																																																																																																																																																																																																																																																									
C	B	A																																																																																																																																																																																																																																																																																																																																																																																																																							
<table border="1" style="width:100%; border-collapse: collapse;"> <thead> <tr> <th rowspan="2">REFERENCE DESIGNATOR</th> <th rowspan="2">DEVICE TYPE</th> <th colspan="2">POWER PINS</th> </tr> <tr> <th>14C/PIN</th> <th>14D/PIN</th> </tr> </thead> <tbody> <tr><td>U1</td><td>5601</td><td>27</td><td>15</td></tr> <tr><td>U2</td><td>74ACT106</td><td>16</td><td>8</td></tr> <tr><td>U3</td><td>74ACT106</td><td>16</td><td>15</td></tr> <tr><td>U4</td><td>74ACT106</td><td>16</td><td>15</td></tr> <tr><td>U5</td><td>5601</td><td>27</td><td>15</td></tr> <tr><td>U6</td><td>74ACT106</td><td>16</td><td>15</td></tr> <tr><td>U7</td><td>5601</td><td>27</td><td>15</td></tr> <tr><td>U8</td><td>74ACT106</td><td>16</td><td>15</td></tr> <tr><td>U9</td><td>74ACT106</td><td>16</td><td>15</td></tr> <tr><td>U10</td><td>74ACT106</td><td>16</td><td>15</td></tr> <tr><td>U11</td><td>5601</td><td>27</td><td>15</td></tr> <tr><td>U12</td><td>5601</td><td>27</td><td>15</td></tr> <tr><td>U13</td><td>5601</td><td>27</td><td>15</td></tr> <tr><td>U14</td><td>5601</td><td>27</td><td>15</td></tr> <tr><td>U15</td><td>5601</td><td>27</td><td>15</td></tr> <tr><td>U16</td><td>74ACT106</td><td>16</td><td>15</td></tr> <tr><td>U17</td><td>74ACT106</td><td>16</td><td>15</td></tr> <tr><td>U18</td><td>74ACT106</td><td>16</td><td>15</td></tr> <tr><td>U19</td><td>5601</td><td>27</td><td>15</td></tr> <tr><td>U20</td><td>74ACT106</td><td>16</td><td>15</td></tr> <tr><td>U21</td><td>74ACT106</td><td>16</td><td>15</td></tr> <tr><td>U22</td><td>74ACT106</td><td>16</td><td>15</td></tr> <tr><td>U23</td><td>74ACT106</td><td>16</td><td>15</td></tr> <tr><td>U24</td><td>74ACT106</td><td>16</td><td>15</td></tr> <tr><td>U25</td><td>74ACT106</td><td>16</td><td>15</td></tr> <tr><td>U26</td><td>74ACT106</td><td>16</td><td>15</td></tr> <tr><td>U27</td><td>74ACT106</td><td>16</td><td>15</td></tr> <tr><td>U28</td><td>74ACT106</td><td>16</td><td>15</td></tr> <tr><td>U29</td><td>74ACT106</td><td>16</td><td>15</td></tr> <tr><td>U30</td><td>74ACT106</td><td>16</td><td>15</td></tr> <tr><td>U31</td><td>74ACT106</td><td>16</td><td>15</td></tr> <tr><td>U32</td><td>74ACT106</td><td>16</td><td>15</td></tr> <tr><td>U33</td><td>74ACT106</td><td>16</td><td>15</td></tr> <tr><td>U34</td><td>74ACT106</td><td>16</td><td>15</td></tr> <tr><td>U35</td><td>74ACT106</td><td>16</td><td>15</td></tr> <tr><td>U36</td><td>74ACT106</td><td>16</td><td>15</td></tr> <tr><td>U37</td><td>74ACT106</td><td>16</td><td>15</td></tr> <tr><td>U38</td><td>74ACT106</td><td>16</td><td>15</td></tr> <tr><td>U39</td><td>74ACT106</td><td>16</td><td>15</td></tr> <tr><td>U40</td><td>74ACT106</td><td>16</td><td>15</td></tr> <tr><td>U41</td><td>74ACT106</td><td>16</td><td>15</td></tr> <tr><td>U42</td><td>74ACT106</td><td>16</td><td>15</td></tr> <tr><td>U43</td><td>74ACT106</td><td>16</td><td>15</td></tr> <tr><td>U44</td><td>74ACT106</td><td>16</td><td>15</td></tr> <tr><td>U45</td><td>74ACT106</td><td>16</td><td>15</td></tr> <tr><td>U46</td><td>74ACT106</td><td>16</td><td>15</td></tr> <tr><td>U47</td><td>74ACT106</td><td>16</td><td>15</td></tr> <tr><td>U48</td><td>74ACT106</td><td>16</td><td>15</td></tr> <tr><td>U49</td><td>74ACT106</td><td>16</td><td>15</td></tr> <tr><td>U50</td><td>74ACT106</td><td>16</td><td>15</td></tr> <tr><td>U51</td><td>74ACT106</td><td>16</td><td>15</td></tr> <tr><td>U52</td><td>74ACT106</td><td>16</td><td>15</td></tr> <tr><td>U53</td><td>74ACT106</td><td>16</td><td>15</td></tr> <tr><td>U54</td><td>74ACT106</td><td>16</td><td>15</td></tr> <tr><td>U55</td><td>74ACT106</td><td>16</td><td>15</td></tr> <tr><td>U56</td><td>74ACT106</td><td>16</td><td>15</td></tr> <tr><td>U57</td><td>74ACT106</td><td>16</td><td>15</td></tr> <tr><td>U58</td><td>74ACT106</td><td>16</td><td>15</td></tr> <tr><td>U59</td><td>74ACT106</td><td>16</td><td>15</td></tr> <tr><td>U60</td><td>74ACT106</td><td>16</td><td>15</td></tr> <tr><td>U61</td><td>74ACT106</td><td>16</td><td>15</td></tr> <tr><td>U62</td><td>74ACT106</td><td>16</td><td>15</td></tr> <tr><td>U63</td><td>74ACT106</td><td>16</td><td>15</td></tr> <tr><td>U64</td><td>74ACT106</td><td>16</td><td>15</td></tr> <tr><td>U65</td><td>74ACT106</td><td>16</td><td>15</td></tr> <tr><td>U66</td><td>74ACT106</td><td>16</td><td>15</td></tr> <tr><td>U67</td><td>74ACT106</td><td>16</td><td>15</td></tr> <tr><td>U68</td><td>74ACT106</td><td>16</td><td>15</td></tr> <tr><td>U69</td><td>74ACT106</td><td>16</td><td>15</td></tr> <tr><td>U70</td><td>74ACT106</td><td>16</td><td>15</td></tr> <tr><td>U71</td><td>74ACT106</td><td>16</td><td>15</td></tr> <tr><td>U72</td><td>74ACT106</td><td>16</td><td>15</td></tr> <tr><td>U73</td><td>74ACT106</td><td>16</td><td>15</td></tr> <tr><td>U74</td><td>74ACT106</td><td>16</td><td>15</td></tr> <tr><td>U75</td><td>74ACT106</td><td>16</td><td>15</td></tr> <tr><td>U76</td><td>74ACT106</td><td>16</td><td>15</td></tr> <tr><td>U77</td><td>74ACT106</td><td>16</td><td>15</td></tr> <tr><td>U78</td><td>74ACT106</td><td>16</td><td>15</td></tr> <tr><td>U79</td><td>74ACT106</td><td>16</td><td>15</td></tr> <tr><td>U80</td><td>74ACT106</td><td>16</td><td>15</td></tr> <tr><td>U81</td><td>74ACT106</td><td>16</td><td>15</td></tr> <tr><td>U82</td><td>74ACT106</td><td>16</td><td>15</td></tr> <tr><td>U83</td><td>74ACT106</td><td>16</td><td>15</td></tr> <tr><td>U84</td><td>74ACT106</td><td>16</td><td>15</td></tr> <tr><td>U85</td><td>74ACT106</td><td>16</td><td>15</td></tr> <tr><td>U86</td><td>74ACT106</td><td>16</td><td>15</td></tr> <tr><td>U87</td><td>74ACT106</td><td>16</td><td>15</td></tr> <tr><td>U88</td><td>74ACT106</td><td>16</td><td>15</td></tr> <tr><td>U89</td><td>74ACT106</td><td>16</td><td>15</td></tr> <tr><td>U90</td><td>74ACT106</td><td>16</td><td>15</td></tr> <tr><td>U91</td><td>74ACT106</td><td>16</td><td>15</td></tr> <tr><td>U92</td><td>74ACT106</td><td>16</td><td>15</td></tr> <tr><td>U93</td><td>74ACT106</td><td>16</td><td>15</td></tr> <tr><td>U94</td><td>74ACT106</td><td>16</td><td>15</td></tr> <tr><td>U95</td><td>74ACT106</td><td>16</td><td>15</td></tr> <tr><td>U96</td><td>74ACT106</td><td>16</td><td>15</td></tr> <tr><td>U97</td><td>74ACT106</td><td>16</td><td>15</td></tr> <tr><td>U98</td><td>74ACT106</td><td>16</td><td>15</td></tr> <tr><td>U99</td><td>74ACT106</td><td>16</td><td>15</td></tr> <tr><td>U100</td><td>74ACT106</td><td>16</td><td>15</td></tr> </tbody> </table>				REFERENCE DESIGNATOR	DEVICE TYPE	POWER PINS		14C/PIN	14D/PIN	U1	5601	27	15	U2	74ACT106	16	8	U3	74ACT106	16	15	U4	74ACT106	16	15	U5	5601	27	15	U6	74ACT106	16	15	U7	5601	27	15	U8	74ACT106	16	15	U9	74ACT106	16	15	U10	74ACT106	16	15	U11	5601	27	15	U12	5601	27	15	U13	5601	27	15	U14	5601	27	15	U15	5601	27	15	U16	74ACT106	16	15	U17	74ACT106	16	15	U18	74ACT106	16	15	U19	5601	27	15	U20	74ACT106	16	15	U21	74ACT106	16	15	U22	74ACT106	16	15	U23	74ACT106	16	15	U24	74ACT106	16	15	U25	74ACT106	16	15	U26	74ACT106	16	15	U27	74ACT106	16	15	U28	74ACT106	16	15	U29	74ACT106	16	15	U30	74ACT106	16	15	U31	74ACT106	16	15	U32	74ACT106	16	15	U33	74ACT106	16	15	U34	74ACT106	16	15	U35	74ACT106	16	15	U36	74ACT106	16	15	U37	74ACT106	16	15	U38	74ACT106	16	15	U39	74ACT106	16	15	U40	74ACT106	16	15	U41	74ACT106	16	15	U42	74ACT106	16	15	U43	74ACT106	16	15	U44	74ACT106	16	15	U45	74ACT106	16	15	U46	74ACT106	16	15	U47	74ACT106	16	15	U48	74ACT106	16	15	U49	74ACT106	16	15	U50	74ACT106	16	15	U51	74ACT106	16	15	U52	74ACT106	16	15	U53	74ACT106	16	15	U54	74ACT106	16	15	U55	74ACT106	16	15	U56	74ACT106	16	15	U57	74ACT106	16	15	U58	74ACT106	16	15	U59	74ACT106	16	15	U60	74ACT106	16	15	U61	74ACT106	16	15	U62	74ACT106	16	15	U63	74ACT106	16	15	U64	74ACT106	16	15	U65	74ACT106	16	15	U66	74ACT106	16	15	U67	74ACT106	16	15	U68	74ACT106	16	15	U69	74ACT106	16	15	U70	74ACT106	16	15	U71	74ACT106	16	15	U72	74ACT106	16	15	U73	74ACT106	16	15	U74	74ACT106	16	15	U75	74ACT106	16	15	U76	74ACT106	16	15	U77	74ACT106	16	15	U78	74ACT106	16	15	U79	74ACT106	16	15	U80	74ACT106	16	15	U81	74ACT106	16	15	U82	74ACT106	16	15	U83	74ACT106	16	15	U84	74ACT106	16	15	U85	74ACT106	16	15	U86	74ACT106	16	15	U87	74ACT106	16	15	U88	74ACT106	16	15	U89	74ACT106	16	15	U90	74ACT106	16	15	U91	74ACT106	16	15	U92	74ACT106	16	15	U93	74ACT106	16	15	U94	74ACT106	16	15	U95	74ACT106	16	15	U96	74ACT106	16	15	U97	74ACT106	16	15	U98	74ACT106	16	15	U99	74ACT106	16	15	U100	74ACT106	16	15
REFERENCE DESIGNATOR	DEVICE TYPE	POWER PINS																																																																																																																																																																																																																																																																																																																																																																																																																							
		14C/PIN	14D/PIN																																																																																																																																																																																																																																																																																																																																																																																																																						
U1	5601	27	15																																																																																																																																																																																																																																																																																																																																																																																																																						
U2	74ACT106	16	8																																																																																																																																																																																																																																																																																																																																																																																																																						
U3	74ACT106	16	15																																																																																																																																																																																																																																																																																																																																																																																																																						
U4	74ACT106	16	15																																																																																																																																																																																																																																																																																																																																																																																																																						
U5	5601	27	15																																																																																																																																																																																																																																																																																																																																																																																																																						
U6	74ACT106	16	15																																																																																																																																																																																																																																																																																																																																																																																																																						
U7	5601	27	15																																																																																																																																																																																																																																																																																																																																																																																																																						
U8	74ACT106	16	15																																																																																																																																																																																																																																																																																																																																																																																																																						
U9	74ACT106	16	15																																																																																																																																																																																																																																																																																																																																																																																																																						
U10	74ACT106	16	15																																																																																																																																																																																																																																																																																																																																																																																																																						
U11	5601	27	15																																																																																																																																																																																																																																																																																																																																																																																																																						
U12	5601	27	15																																																																																																																																																																																																																																																																																																																																																																																																																						
U13	5601	27	15																																																																																																																																																																																																																																																																																																																																																																																																																						
U14	5601	27	15																																																																																																																																																																																																																																																																																																																																																																																																																						
U15	5601	27	15																																																																																																																																																																																																																																																																																																																																																																																																																						
U16	74ACT106	16	15																																																																																																																																																																																																																																																																																																																																																																																																																						
U17	74ACT106	16	15																																																																																																																																																																																																																																																																																																																																																																																																																						
U18	74ACT106	16	15																																																																																																																																																																																																																																																																																																																																																																																																																						
U19	5601	27	15																																																																																																																																																																																																																																																																																																																																																																																																																						
U20	74ACT106	16	15																																																																																																																																																																																																																																																																																																																																																																																																																						
U21	74ACT106	16	15																																																																																																																																																																																																																																																																																																																																																																																																																						
U22	74ACT106	16	15																																																																																																																																																																																																																																																																																																																																																																																																																						
U23	74ACT106	16	15																																																																																																																																																																																																																																																																																																																																																																																																																						
U24	74ACT106	16	15																																																																																																																																																																																																																																																																																																																																																																																																																						
U25	74ACT106	16	15																																																																																																																																																																																																																																																																																																																																																																																																																						
U26	74ACT106	16	15																																																																																																																																																																																																																																																																																																																																																																																																																						
U27	74ACT106	16	15																																																																																																																																																																																																																																																																																																																																																																																																																						
U28	74ACT106	16	15																																																																																																																																																																																																																																																																																																																																																																																																																						
U29	74ACT106	16	15																																																																																																																																																																																																																																																																																																																																																																																																																						
U30	74ACT106	16	15																																																																																																																																																																																																																																																																																																																																																																																																																						
U31	74ACT106	16	15																																																																																																																																																																																																																																																																																																																																																																																																																						
U32	74ACT106	16	15																																																																																																																																																																																																																																																																																																																																																																																																																						
U33	74ACT106	16	15																																																																																																																																																																																																																																																																																																																																																																																																																						
U34	74ACT106	16	15																																																																																																																																																																																																																																																																																																																																																																																																																						
U35	74ACT106	16	15																																																																																																																																																																																																																																																																																																																																																																																																																						
U36	74ACT106	16	15																																																																																																																																																																																																																																																																																																																																																																																																																						
U37	74ACT106	16	15																																																																																																																																																																																																																																																																																																																																																																																																																						
U38	74ACT106	16	15																																																																																																																																																																																																																																																																																																																																																																																																																						
U39	74ACT106	16	15																																																																																																																																																																																																																																																																																																																																																																																																																						
U40	74ACT106	16	15																																																																																																																																																																																																																																																																																																																																																																																																																						
U41	74ACT106	16	15																																																																																																																																																																																																																																																																																																																																																																																																																						
U42	74ACT106	16	15																																																																																																																																																																																																																																																																																																																																																																																																																						
U43	74ACT106	16	15																																																																																																																																																																																																																																																																																																																																																																																																																						
U44	74ACT106	16	15																																																																																																																																																																																																																																																																																																																																																																																																																						
U45	74ACT106	16	15																																																																																																																																																																																																																																																																																																																																																																																																																						
U46	74ACT106	16	15																																																																																																																																																																																																																																																																																																																																																																																																																						
U47	74ACT106	16	15																																																																																																																																																																																																																																																																																																																																																																																																																						
U48	74ACT106	16	15																																																																																																																																																																																																																																																																																																																																																																																																																						
U49	74ACT106	16	15																																																																																																																																																																																																																																																																																																																																																																																																																						
U50	74ACT106	16	15																																																																																																																																																																																																																																																																																																																																																																																																																						
U51	74ACT106	16	15																																																																																																																																																																																																																																																																																																																																																																																																																						
U52	74ACT106	16	15																																																																																																																																																																																																																																																																																																																																																																																																																						
U53	74ACT106	16	15																																																																																																																																																																																																																																																																																																																																																																																																																						
U54	74ACT106	16	15																																																																																																																																																																																																																																																																																																																																																																																																																						
U55	74ACT106	16	15																																																																																																																																																																																																																																																																																																																																																																																																																						
U56	74ACT106	16	15																																																																																																																																																																																																																																																																																																																																																																																																																						
U57	74ACT106	16	15																																																																																																																																																																																																																																																																																																																																																																																																																						
U58	74ACT106	16	15																																																																																																																																																																																																																																																																																																																																																																																																																						
U59	74ACT106	16	15																																																																																																																																																																																																																																																																																																																																																																																																																						
U60	74ACT106	16	15																																																																																																																																																																																																																																																																																																																																																																																																																						
U61	74ACT106	16	15																																																																																																																																																																																																																																																																																																																																																																																																																						
U62	74ACT106	16	15																																																																																																																																																																																																																																																																																																																																																																																																																						
U63	74ACT106	16	15																																																																																																																																																																																																																																																																																																																																																																																																																						
U64	74ACT106	16	15																																																																																																																																																																																																																																																																																																																																																																																																																						
U65	74ACT106	16	15																																																																																																																																																																																																																																																																																																																																																																																																																						
U66	74ACT106	16	15																																																																																																																																																																																																																																																																																																																																																																																																																						
U67	74ACT106	16	15																																																																																																																																																																																																																																																																																																																																																																																																																						
U68	74ACT106	16	15																																																																																																																																																																																																																																																																																																																																																																																																																						
U69	74ACT106	16	15																																																																																																																																																																																																																																																																																																																																																																																																																						
U70	74ACT106	16	15																																																																																																																																																																																																																																																																																																																																																																																																																						
U71	74ACT106	16	15																																																																																																																																																																																																																																																																																																																																																																																																																						
U72	74ACT106	16	15																																																																																																																																																																																																																																																																																																																																																																																																																						
U73	74ACT106	16	15																																																																																																																																																																																																																																																																																																																																																																																																																						
U74	74ACT106	16	15																																																																																																																																																																																																																																																																																																																																																																																																																						
U75	74ACT106	16	15																																																																																																																																																																																																																																																																																																																																																																																																																						
U76	74ACT106	16	15																																																																																																																																																																																																																																																																																																																																																																																																																						
U77	74ACT106	16	15																																																																																																																																																																																																																																																																																																																																																																																																																						
U78	74ACT106	16	15																																																																																																																																																																																																																																																																																																																																																																																																																						
U79	74ACT106	16	15																																																																																																																																																																																																																																																																																																																																																																																																																						
U80	74ACT106	16	15																																																																																																																																																																																																																																																																																																																																																																																																																						
U81	74ACT106	16	15																																																																																																																																																																																																																																																																																																																																																																																																																						
U82	74ACT106	16	15																																																																																																																																																																																																																																																																																																																																																																																																																						
U83	74ACT106	16	15																																																																																																																																																																																																																																																																																																																																																																																																																						
U84	74ACT106	16	15																																																																																																																																																																																																																																																																																																																																																																																																																						
U85	74ACT106	16	15																																																																																																																																																																																																																																																																																																																																																																																																																						
U86	74ACT106	16	15																																																																																																																																																																																																																																																																																																																																																																																																																						
U87	74ACT106	16	15																																																																																																																																																																																																																																																																																																																																																																																																																						
U88	74ACT106	16	15																																																																																																																																																																																																																																																																																																																																																																																																																						
U89	74ACT106	16	15																																																																																																																																																																																																																																																																																																																																																																																																																						
U90	74ACT106	16	15																																																																																																																																																																																																																																																																																																																																																																																																																						
U91	74ACT106	16	15																																																																																																																																																																																																																																																																																																																																																																																																																						
U92	74ACT106	16	15																																																																																																																																																																																																																																																																																																																																																																																																																						
U93	74ACT106	16	15																																																																																																																																																																																																																																																																																																																																																																																																																						
U94	74ACT106	16	15																																																																																																																																																																																																																																																																																																																																																																																																																						
U95	74ACT106	16	15																																																																																																																																																																																																																																																																																																																																																																																																																						
U96	74ACT106	16	15																																																																																																																																																																																																																																																																																																																																																																																																																						
U97	74ACT106	16	15																																																																																																																																																																																																																																																																																																																																																																																																																						
U98	74ACT106	16	15																																																																																																																																																																																																																																																																																																																																																																																																																						
U99	74ACT106	16	15																																																																																																																																																																																																																																																																																																																																																																																																																						
U100	74ACT106	16	15																																																																																																																																																																																																																																																																																																																																																																																																																						
<p>PROPRIETARY NOTICE</p> <p>THIS DOCUMENT AND THE TECHNICAL DATA HEREON DISCLOSED ARE PROPRIETARY TO RACAL INSTRUMENTS, INC. NO PART OF THIS DOCUMENT IS TO BE REPRODUCED OR TRANSMITTED IN ANY FORM OR BY ANY MEANS, ELECTRONIC OR MECHANICAL, INCLUDING PHOTOCOPYING, RECORDING, OR BY ANY INFORMATION STORAGE AND RETRIEVAL SYSTEM, WITHOUT THE WRITTEN PERMISSION OF RACAL INSTRUMENTS, INC. BE USED, REPRODUCED OR DISCLOSED IN ANY MANNER WITHOUT THE WRITTEN PERMISSION OF RACAL INSTRUMENTS, INC. THE INFORMATION HEREON HAS BEEN DEVELOPED AT PRIVATE EXPENSE AND IS NOT TO BE DISCLOSED TO ANY OTHER PARTY WITHOUT THE WRITTEN PERMISSION OF RACAL INSTRUMENTS, INC. THIS INFORMATION IS THE PROPERTY OF RACAL INSTRUMENTS, INC. AND IS TO BE USED ONLY FOR THE SPECIFIC PURPOSES AND CONDITIONS SPECIFIED IN THE CONTRACT AND OTHER DOCUMENTS WHICH SPECIFY PROCUREMENT OF PRODUCTS FROM RACAL INSTRUMENTS, INC.</p>																																																																																																																																																																																																																																																																																																																																																																																																																									
<p>RACAL Instruments, Inc. 4 Goodyear St., Irvine, CA. 92618</p> <p>TITLE SCHEM., 1260-131, 26 1x4 MUX</p> <table border="1" style="width:100%; border-collapse: collapse;"> <tr> <td style="text-align: center;">SIZE</td> <td style="text-align: center;">CAGE CODE</td> <td style="text-align: center;">DWG NO.</td> <td style="text-align: center;">REV.</td> </tr> <tr> <td style="text-align: center;">B</td> <td style="text-align: center;">21793</td> <td style="text-align: center;">435183</td> <td style="text-align: center;">A</td> </tr> <tr> <td style="text-align: center;">SCALE</td> <td style="text-align: center;">NONE</td> <td style="text-align: center;">2-Apr-2002</td> <td style="text-align: center;">SHEET 1 OF 13</td> </tr> </table>				SIZE	CAGE CODE	DWG NO.	REV.	B	21793	435183	A	SCALE	NONE	2-Apr-2002	SHEET 1 OF 13																																																																																																																																																																																																																																																																																																																																																																																																										
SIZE	CAGE CODE	DWG NO.	REV.																																																																																																																																																																																																																																																																																																																																																																																																																						
B	21793	435183	A																																																																																																																																																																																																																																																																																																																																																																																																																						
SCALE	NONE	2-Apr-2002	SHEET 1 OF 13																																																																																																																																																																																																																																																																																																																																																																																																																						
1	2	3	4																																																																																																																																																																																																																																																																																																																																																																																																																						



DWG. NO. 435183	SH. 3	REV. A
SIZE B	CAGE CODE 21793	DWG. NO. 435183
SCALE NONE	2-Apr-2002	REV. A
		SHEET 3 OF 13



DWG. NO. 435183

SH. 4

REV. A

4

3

2

1

SIZE B

CAGE CODE 21793

SCALE NONE

DWG NO. 435183

REV. A

2-Apr-2002

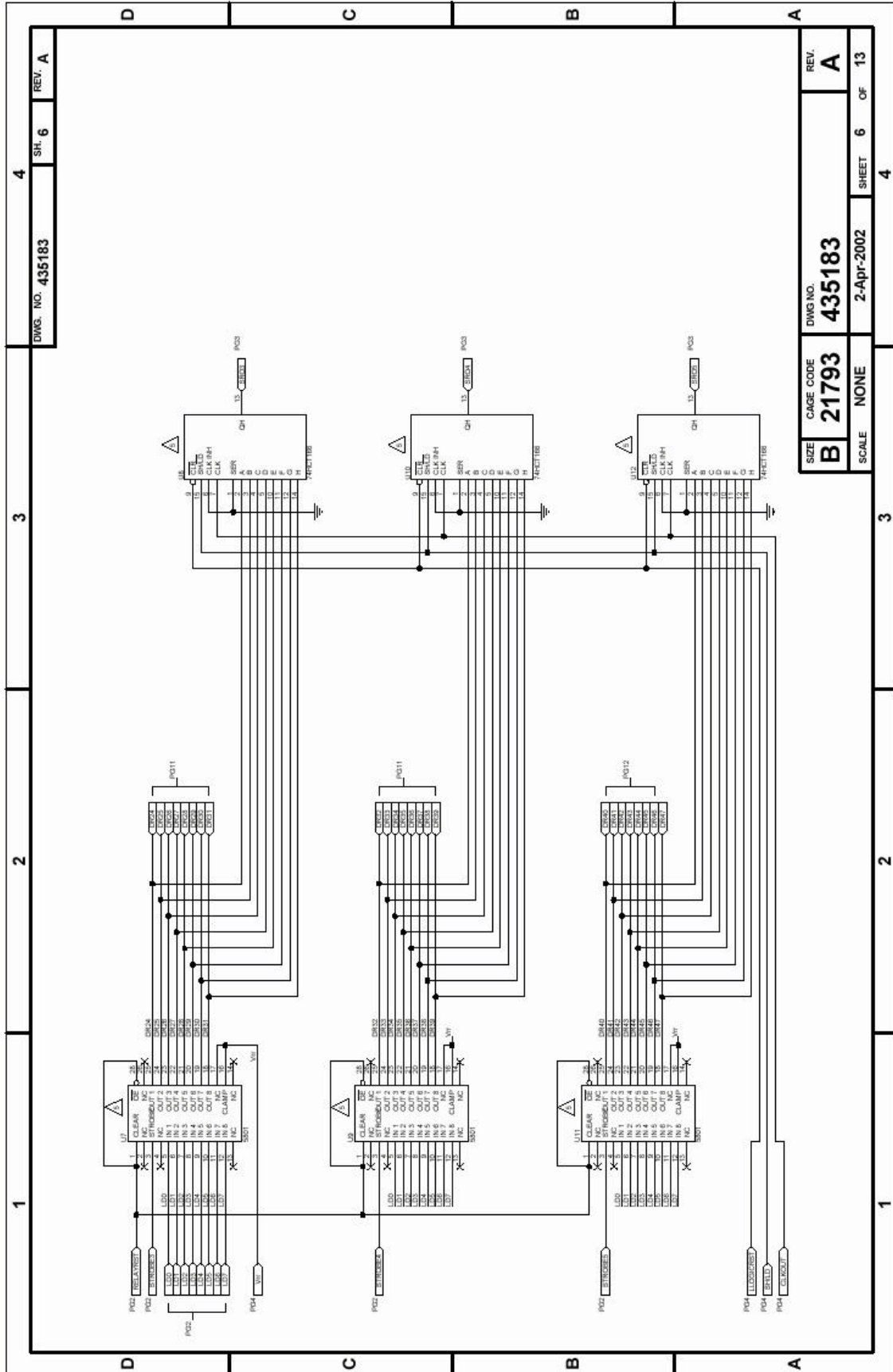
SHEET 4 OF 13

4

3

2

1



DWG. NO. 435183

SH. 6

REV. A

4

3

2

1

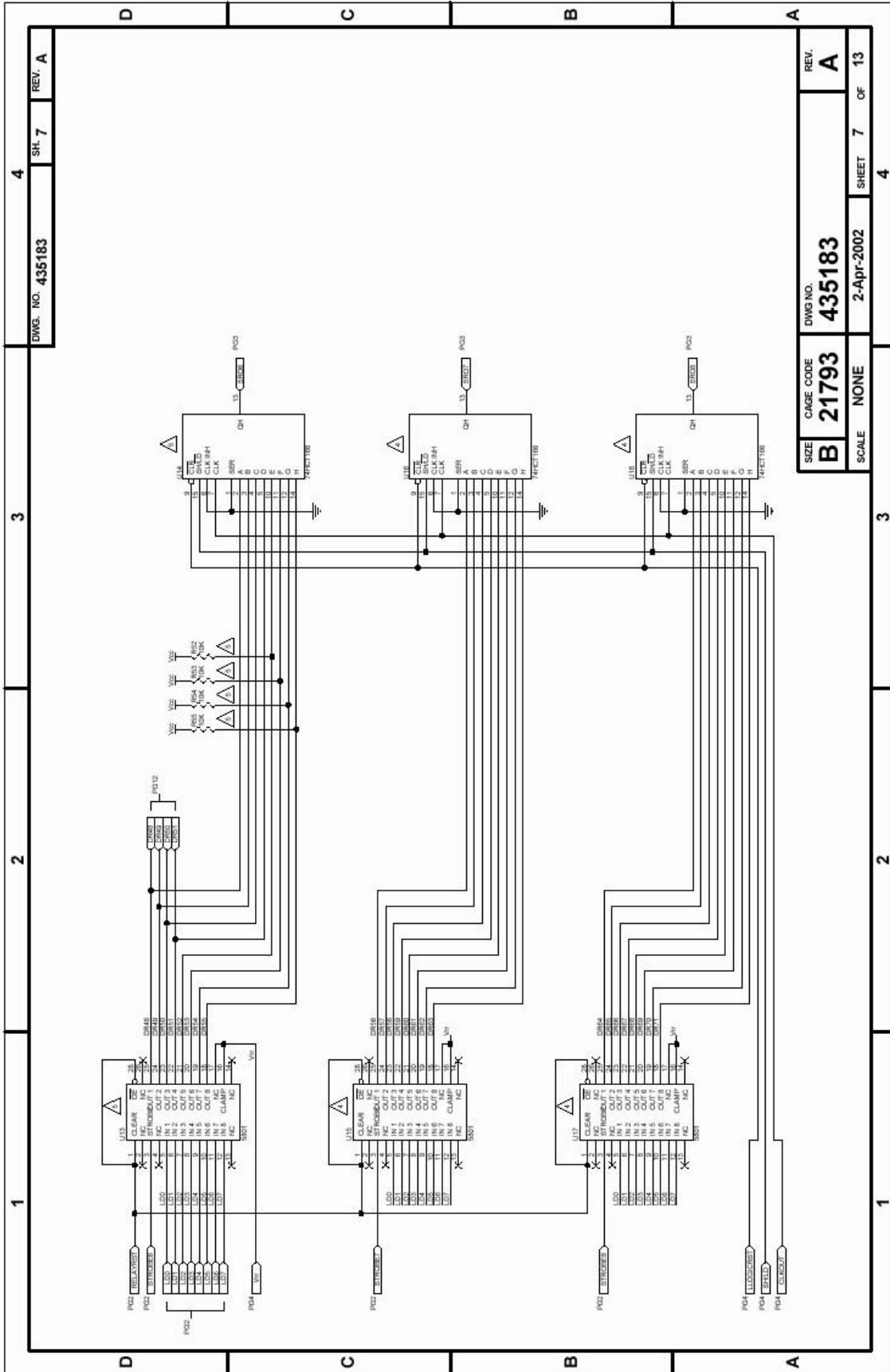
SIZE	CASE CODE	DWG NO.	REV.
B	21793	435183	A
SCALE	NONE	2-Apr-2002	SHEET 6 OF 13

4

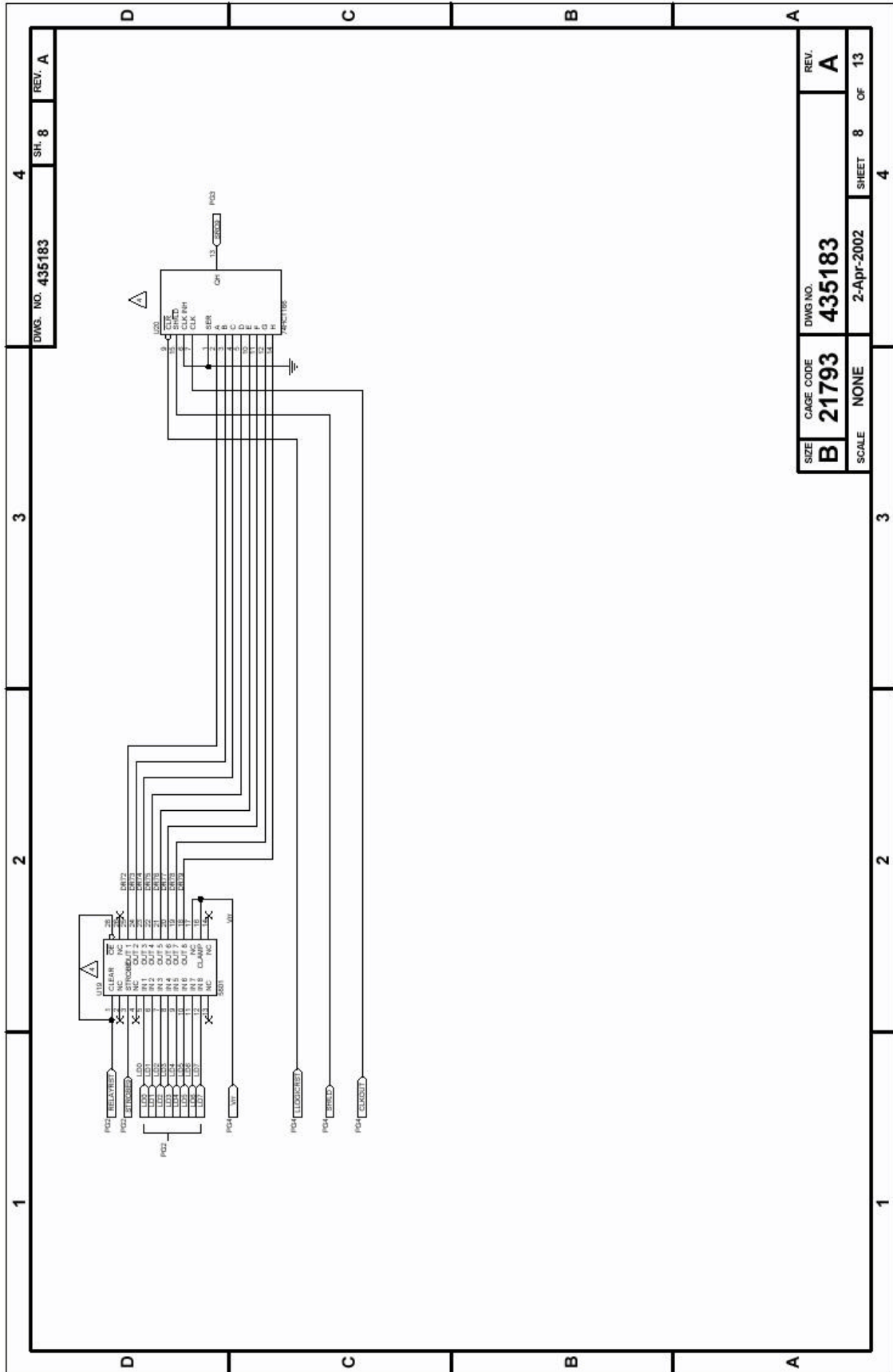
3

2

1

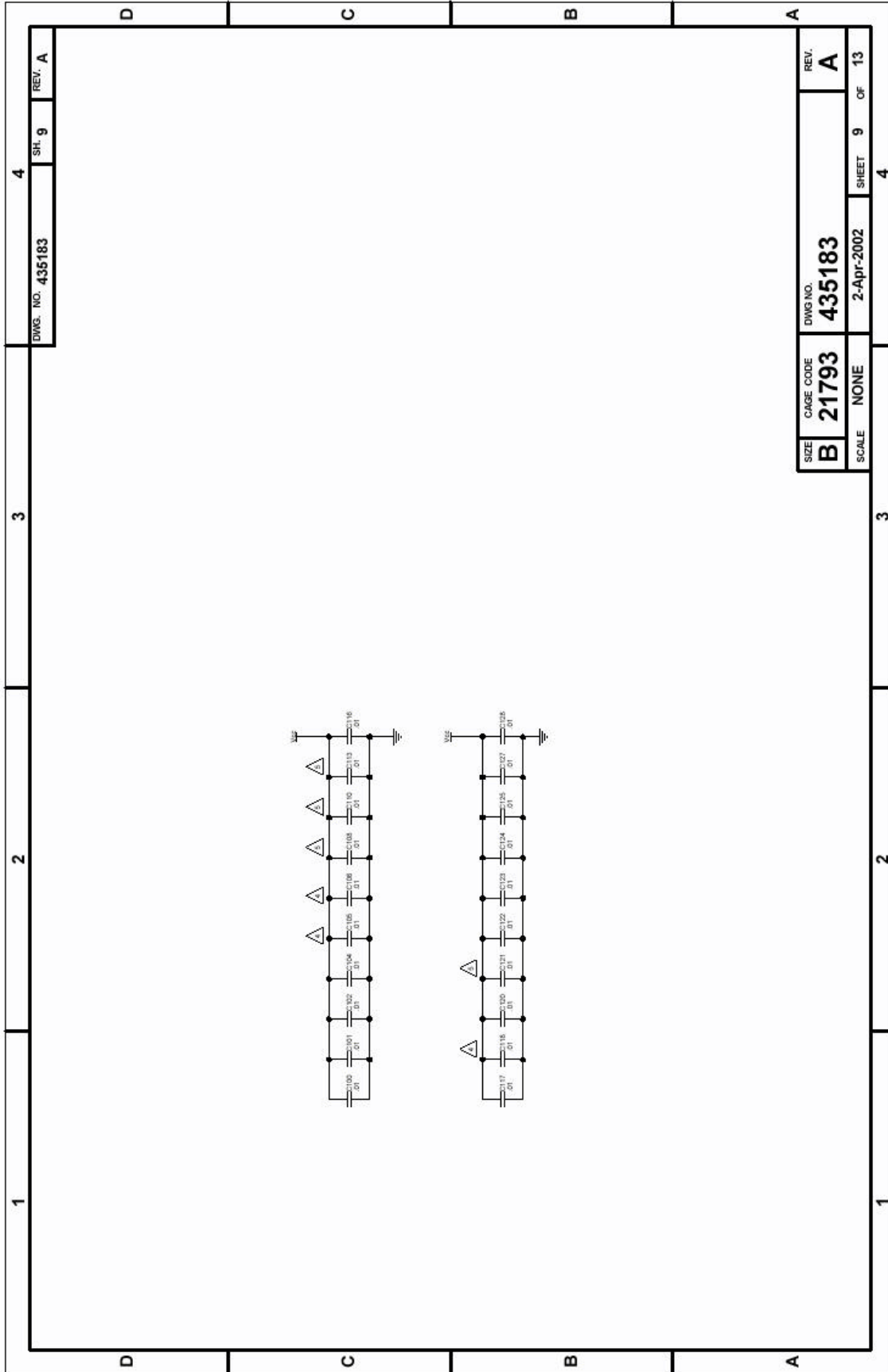


4		SH. 7		REV. A	
3		DWG. NO. 435183			
2					
1					
D		C		B	
A		D		REV.	
D		C		A	
3		SHEET 7		OF 13	
2		SCALE NONE		4	
1		2-Apr-2002			
D		C		B	
A		D		REV.	
D		C		A	
3		SHEET 7		OF 13	
2		SCALE NONE		4	
1		2-Apr-2002			
D		C		B	
A		D		REV.	
D		C		A	
3		SHEET 7		OF 13	
2		SCALE NONE		4	
1		2-Apr-2002			
D		C		B	
A		D		REV.	
D		C		A	
3		SHEET 7		OF 13	
2		SCALE NONE		4	
1		2-Apr-2002			
D		C		B	
A		D		REV.	
D		C		A	
3		SHEET 7		OF 13	
2		SCALE NONE		4	
1		2-Apr-2002			
D		C		B	
A		D		REV.	
D		C		A	
3		SHEET 7		OF 13	
2		SCALE NONE		4	
1		2-Apr-2002			
D		C		B	
A		D		REV.	
D		C		A	
3		SHEET 7		OF 13	
2		SCALE NONE		4	
1		2-Apr-2002			
D		C		B	
A		D		REV.	
D		C		A	
3		SHEET 7		OF 13	
2		SCALE NONE		4	
1		2-Apr-2002			
D		C		B	
A		D		REV.	
D		C		A	
3		SHEET 7		OF 13	
2		SCALE NONE		4	
1		2-Apr-2002			
D		C		B	
A		D		REV.	
D		C		A	
3		SHEET 7		OF 13	
2		SCALE NONE		4	
1		2-Apr-2002			
D		C		B	
A		D		REV.	
D		C		A	
3		SHEET 7		OF 13	
2		SCALE NONE		4	
1		2-Apr-2002			
D		C		B	
A		D		REV.	
D		C		A	
3		SHEET 7		OF 13	
2		SCALE NONE		4	
1		2-Apr-2002			
D		C		B	
A		D		REV.	
D		C		A	
3		SHEET 7		OF 13	
2		SCALE NONE		4	
1		2-Apr-2002			
D		C		B	
A		D		REV.	
D		C		A	
3		SHEET 7		OF 13	
2		SCALE NONE		4	
1		2-Apr-2002			
D		C		B	
A		D		REV.	
D		C		A	
3		SHEET 7		OF 13	
2		SCALE NONE		4	
1		2-Apr-2002			
D		C		B	
A		D		REV.	
D		C		A	
3		SHEET 7		OF 13	
2		SCALE NONE		4	
1		2-Apr-2002			
D		C		B	
A		D		REV.	
D		C		A	
3		SHEET 7		OF 13	
2		SCALE NONE		4	
1		2-Apr-2002			
D		C		B	
A		D		REV.	
D		C		A	
3		SHEET 7		OF 13	
2		SCALE NONE		4	
1		2-Apr-2002			
D		C		B	
A		D		REV.	
D		C		A	
3		SHEET 7		OF 13	
2		SCALE NONE		4	
1		2-Apr-2002			
D		C		B	
A		D		REV.	
D		C		A	
3		SHEET 7		OF 13	
2		SCALE NONE		4	
1		2-Apr-2002			
D		C		B	
A		D		REV.	
D		C		A	
3		SHEET 7		OF 13	
2		SCALE NONE		4	
1		2-Apr-2002			
D		C		B	
A		D		REV.	
D		C		A	
3		SHEET 7		OF 13	
2		SCALE NONE		4	
1		2-Apr-2002			
D		C		B	
A		D		REV.	
D		C		A	
3		SHEET 7		OF 13	
2		SCALE NONE		4	
1		2-Apr-2002			
D		C		B	
A		D		REV.	
D		C		A	
3		SHEET 7		OF 13	
2		SCALE NONE		4	
1		2-Apr-2002			
D		C		B	
A		D		REV.	
D		C		A	
3		SHEET 7		OF 13	
2		SCALE NONE		4	
1		2-Apr-2002			
D		C		B	
A		D		REV.	
D		C		A	
3		SHEET 7		OF 13	
2		SCALE NONE		4	
1		2-Apr-2002			
D		C		B	
A		D		REV.	
D		C		A	
3		SHEET 7		OF 13	
2		SCALE NONE		4	
1		2-Apr-2002			
D		C		B	
A		D		REV.	
D		C		A	
3		SHEET 7		OF 13	
2		SCALE NONE		4	
1		2-Apr-2002			
D		C		B	
A		D		REV.	
D		C		A	
3		SHEET 7		OF 13	
2		SCALE NONE		4	
1		2-Apr-2002			
D		C		B	
A		D		REV.	
D		C		A	
3		SHEET 7		OF 13	
2		SCALE NONE		4	
1		2-Apr-2002			
D		C		B	
A		D		REV.	
D		C		A	
3		SHEET 7		OF 13	
2		SCALE NONE		4	
1		2-Apr-2002			
D		C		B	
A		D		REV.	
D		C		A	
3		SHEET 7		OF 13	
2		SCALE NONE		4	
1		2-Apr-2002			
D		C		B	
A		D		REV.	
D		C		A	
3		SHEET 7		OF 13	
2		SCALE NONE		4	
1		2-Apr-2002			
D		C		B	
A		D		REV.	
D		C		A	
3		SHEET 7		OF 13	
2		SCALE NONE		4	
1		2-Apr-2002			
D		C		B	
A		D		REV.	
D		C		A	
3		SHEET 7		OF 13	
2		SCALE NONE		4	
1		2-Apr-2002			
D		C		B	
A		D		REV.	
D		C		A	
3		SHEET 7		OF 13	
2		SCALE NONE		4	
1		2-Apr-2002			
D		C		B	
A		D		REV.	
D		C		A	
3		SHEET 7		OF 13	
2		SCALE NONE		4	
1		2-Apr-2002			
D		C		B	
A		D		REV.	
D		C		A	
3		SHEET 7		OF 13	
2		SCALE NONE		4	
1		2-Apr-2002			
D		C		B	
A		D		REV.	
D		C		A	
3		SHEET 7		OF 13	
2		SCALE NONE		4	
1		2-Apr-2002			
D		C		B	
A		D		REV.	
D		C		A	
3		SHEET 7		OF 13	
2		SCALE NONE		4	
1		2-Apr-2002			
D		C		B	
A		D		REV.	
D		C		A	
3		SHEET 7		OF 13	
2		SCALE NONE		4	
1		2-Apr-2002			
D		C		B	
A		D		REV.	
D		C		A	
3		SHEET 7		OF 13	
2		SCALE NONE		4	
1		2-Apr-2002			
D		C		B	
A		D		REV.	
D		C		A	
3		SHEET 7		OF 13	
2		SCALE NONE		4	
1		2-Apr-2002			
D		C		B	
A		D		REV.	
D		C		A	
3		SHEET 7		OF 13	
2		SCALE NONE		4	
1		2-Apr-2002			
D		C		B	
A		D		REV.	
D		C		A	
3		SHEET 7		OF 13	
2		SCALE NONE		4	
1		2-Apr-2002			
D		C		B	
A		D		REV.	
D		C		A	
3		SHEET 7		OF 13	
2		SCALE NONE		4	
1		2-Apr-2002			
D		C		B	
A		D		REV.	
D		C		A	
3		SHEET 7		OF 13	
2		SCALE NONE		4	
1		2-Apr-2002			
D		C		B	
A		D		REV.	
D		C		A	
3		SHEET 7		OF 13	
2		SCALE NONE		4	
1		2-Apr-2002			
D		C		B	
A		D		REV.	
D		C		A	
3		SHEET 7		OF 13	
2		SCALE NONE		4	
1		2-Apr-2002			
D		C		B	
A		D		REV.	
D		C		A	
3		SHEET 7		OF 13	
2		SCALE NONE		4	
1		2-Apr-2002			
D		C		B	
A		D		REV.	
D		C		A	
3		SHEET 7		OF 13	
2		SCALE NONE		4	
1		2-Apr-2002			
D					



DWG. NO. 435183
SH. 8
REV. A

SIZE	CASE CODE	DWG NO.	REV.
B	21793	435183	A
SCALE	NONE	2-Apr-2002	SHEET 8 OF 13



DWG. NO. 435183

4

3

2

1

REV. A

SH. 9

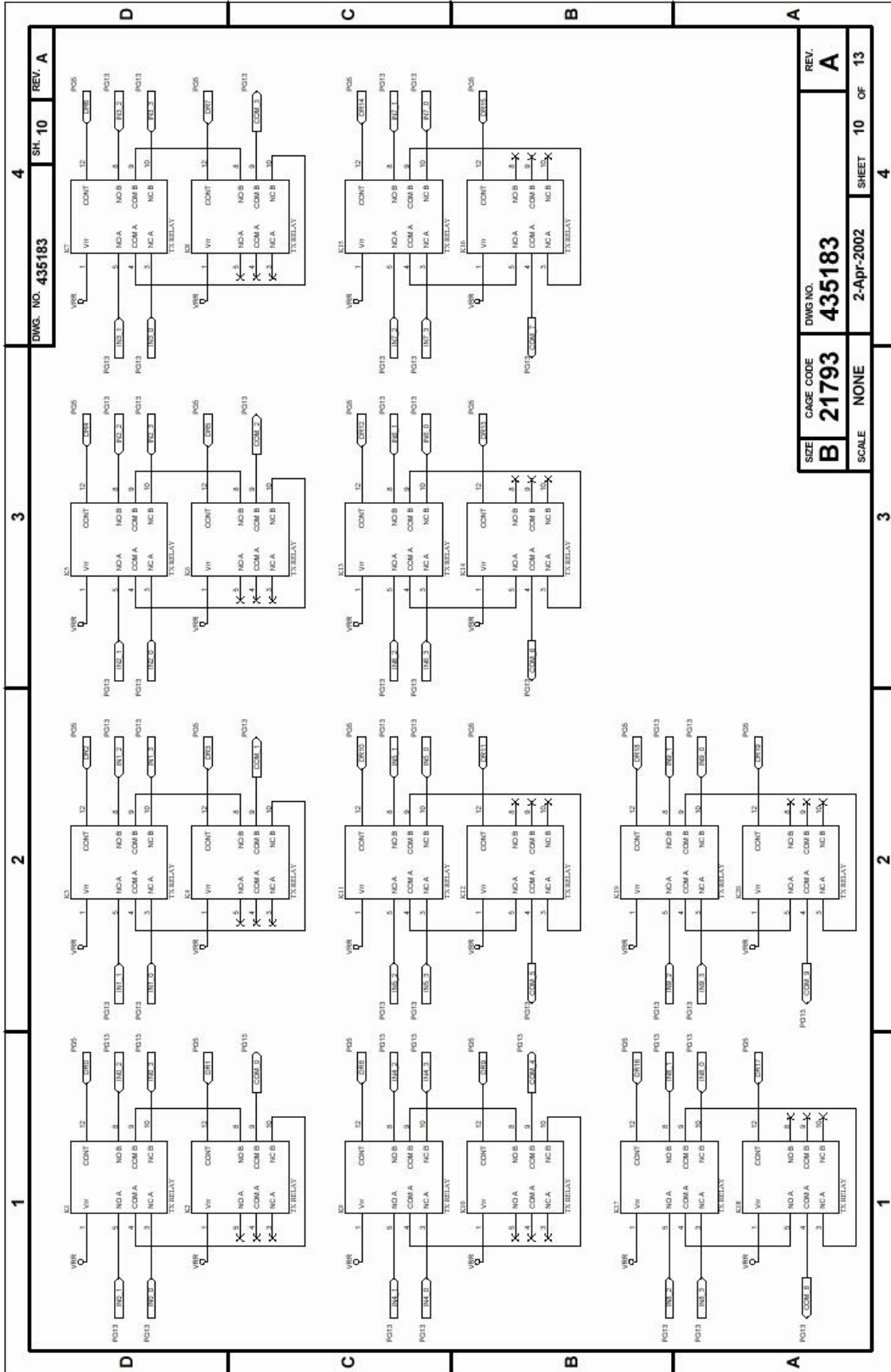
SIZE	CAGE CODE	DWG NO.	REV.
B	21793	435183	A
SCALE	NONE	2-Apr-2002	SHEET 9 OF 13

4

3

2

1

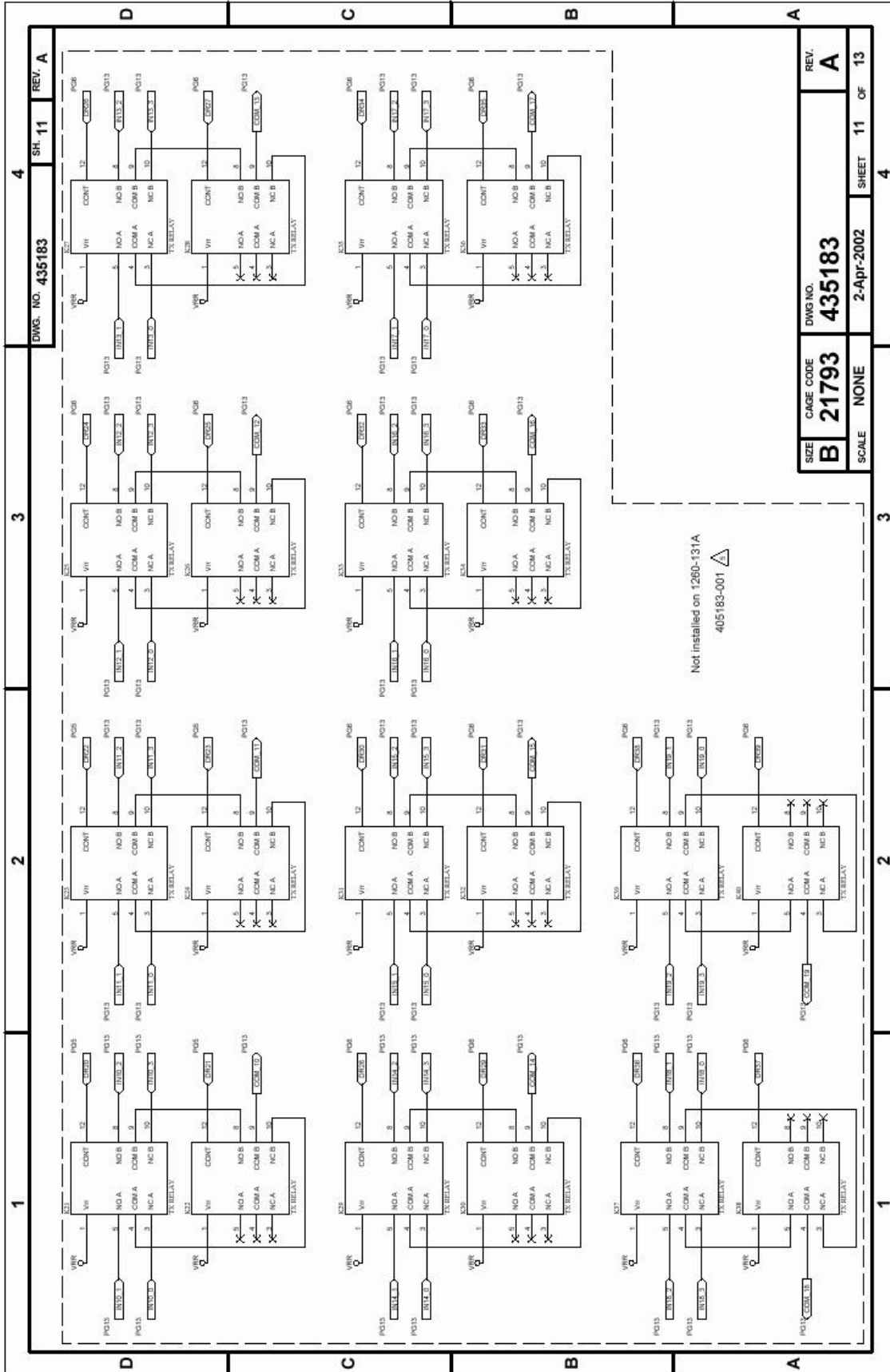


DWG. NO. 435183

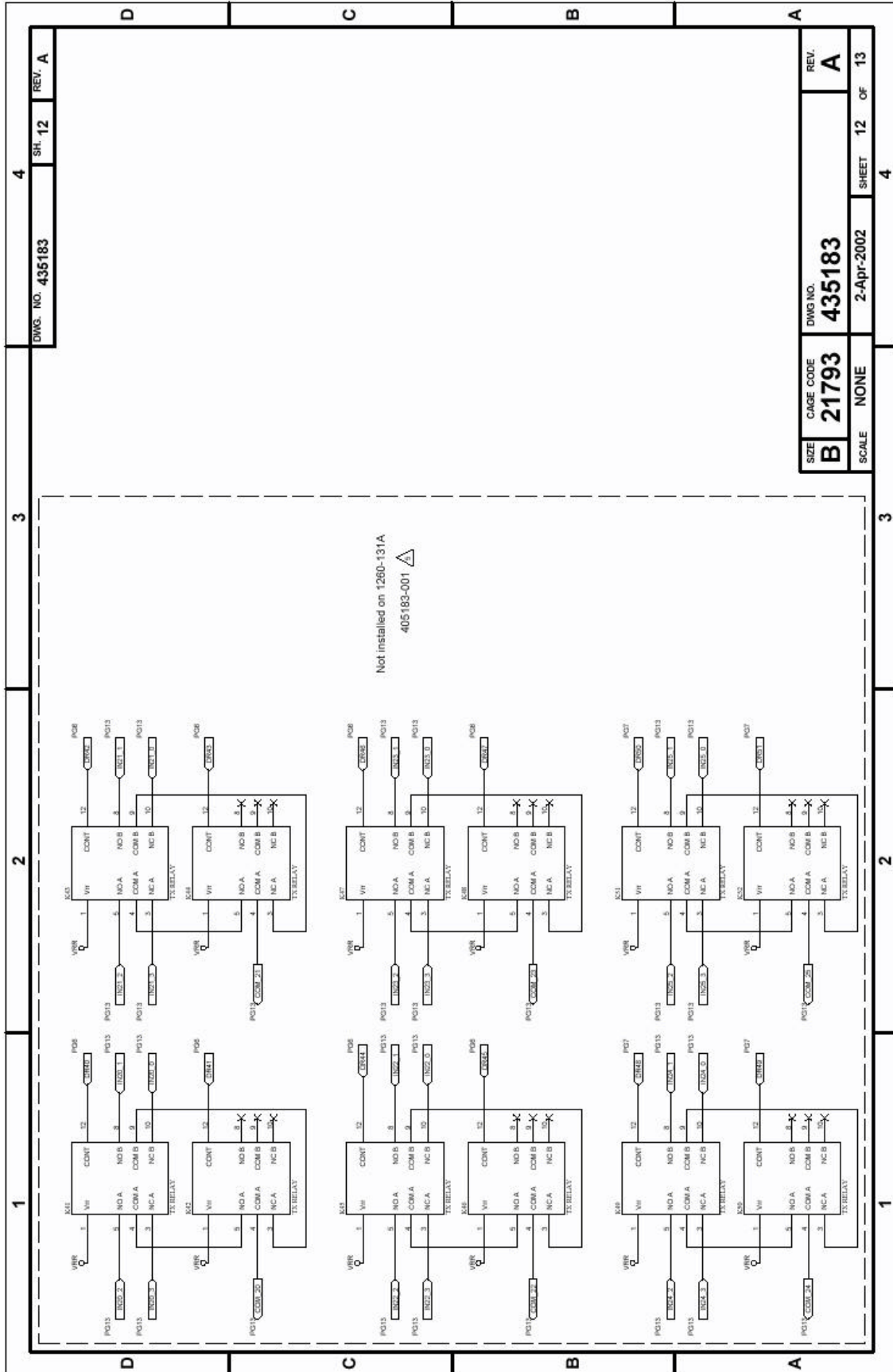
SH. 10

REV. A

SIZE	CAGE CODE	DWG NO.	REV.
B	21793	435183	A
SCALE	NONE	2-Apr-2002	SHEET 10 OF 13



DWS. NO. 435183		SH. 11		REV. A	
SIZE	CAGE CODE	DWS NO.	REV.	SHEET	OF
B	21793	435183	A	11	13
SCALE	NONE	2-Apr-2002			



DWG. NO. 435183
SH. 12
REV. A

SIZE	CAGE CODE	DWG NO.	REV.
B	21793	435183	A
SCALE	NONE	2-Apr-2002	SHEET 12 OF 13

Chapter 5

PARTS LIST

407812-001	Assembly, 1260-131A.....	5-3
407812-002	Assembly, 1260-131B.....	5-3
405183-001	PCB Assembly, 1260-131A.....	5-4
405183-002	PCB Assembly, 1260-131B	5-5

This page was left intentionally blank.

1260-131 User Manual

Assembly 407812-001

Description 1260-131A, 1 WIRE, 10-1X4 MUX –E

EA

Revision Date 2002-02-05

Revision A

#	Component	Description	UM	Qty Reqd	Txt
	405183-001	PCB ASSY, 1260-131A, 10-1X4MUX	EA	1.000	
	980824-131	MANUAL, 1260-131	EA	1.000	

Assembly 407812-002

Description 1260-131B, 1 WIRE, 26-1X4 MUX –E

EA

Revision Date 2002-02-05

Revision A

#	Component	Description	UM	Qty Reqd	Txt
	405183-002	PCB ASSY, 1260-131B, 26-1X4MUX	1.000		
	980824-131	MANUAL, 1260-131	EA	1.000	

Assembly 405183-001

Description PCB ASSY, 1260-131A, 10-1X4MUX-N

Revision Date 2002-04-09

EA

Revision A

#	Component	Description	UM	Qty Reqd	Txt
1	R-21-1801	CPCH2-0010.0N0050V20	EA	16.000	
2	050000-000	RSCH1-000.00H.06W005	EA	2.000	
3	050000-102	RSCH2-001.00K.06W005	EA	5.000	
4	050000-103	RSCH2-010.00K.06W005	EA	8.000	
5	050000-332	RSCH2-003.30K.06W005	EA	1.000	
6	100164	CPFT1-0800.0P0050V	EA	1.000	
7	110236	CPCH3-0003.3U0016V20	EA	2.000	
8	200320	TRBI-NPNSG-SS60V350M	EA	1.000	
9	210118	DISHY-020.0V00.25W	EA	2.000	
10	231091	ICDIG-74HC240---BUFF	EA	2.000	
11	231119	ICDIG-74HC299---SHFT	EA	1.000	
12	231120	ICDIG-74HCT166-SHFT	EA	5.000	
13	231147	ICDIG-74HCT253D---MUX	EA	2.000	
14	231152-003	ICPLA-16L8Q-25-U70-PAL	EA	1.000	
15	231386	ICDIG-74LS161----	EA	3.000	
16	231445	ICDIG-74HCT138---SOIC	EA	2.000	
17	231555	ICINT-5801-PLCC	EA	3.000	
18	231583	ICDIG-7S08FU-SSOP-2INPUTAND	EA	4.000	
19	231584	ICDIG-74ALS05D-SOIC-HEXINVER	EA	1.000	
20	231588-048	ICMEM-27C256-15-PLCCP	EA	1.000	
21	310256-001	RLEM-2P2T05V0178-220SMT	EA	20.000	
22	415183	PCB, 1260-131	EA	1.000	
24	456998	PANEL, FRONT, 1260-131A	EA	1.000	
25	600245	JUMPER INSULATED	EA	1.000	
26	602005	CON-PCB-PLG064S.100D	EA	1.000	
27	602070	CON-PCB-PLG48PC.1003	EA	1.000	
28	611444	S1C-SBDR-M2.5X0.45X11	EA	2.000	
30	616406	S1MPFL9-M2.5X0.45X14	EA	2.000	
31	617041	NT1HEXM2.5-0.50-STL	EA	2.000	
32	617127	W1S004.202D.020T.115	EA	2.000	
33	921423	LABEL, CE MARKING	EA	1.000	

1260-131 User Manual

Assembly 405183-002

Description PCB ASSY, 1260-131B, 26-1X4MUX-N

Revision Date 2002-04-09

EA

Revision A

#	Component	Description	UM	Qty Reqd	Txt
1	R-21-1801	CPCH2-0010.0N0050V20	EA	20.000	
2	050000-000	RSCH1-000.00H.06W005	EA	1.000	
3	050000-102	RSCH2-001.00K.06W005	EA	5.000	
4	050000-103	RSCH2-010.00K.06W005	EA	8.000	
5	050000-332	RSCH2-003.30K.06W005	EA	1.000	
6	100164	CPFT1-0800.0P0050V	EA	1.000	
7	110236	CPCH3-0003.3U0016V20	EA	2.000	
8	200320	TRBI-NPNSG-SS60V350M	EA	1.000	
9	210118	DISHY-020.0V00.25W	EA	2.000	
10	231091	ICDIG-74HC240---BUFF	EA	2.000	
11	231119	ICDIG-74HC299---SHFT	EA	1.000	
12	231120	ICDIG-74HCT166-SHFT	EA	9.000	
13	231147	ICDIG-74HCT253D---MUX	EA	2.000	
14	231152-003	ICPLA-16L8Q-25-U70-PAL	EA	1.000	
15	231386	ICDIG-74LS161----	EA	3.000	
16	231445	ICDIG-74HCT138---SOIC	EA	3.000	
17	231555	ICINT-5801-PLCC	EA	7.000	
18	231583	ICDIG-7S08FU-SSOP-2INPUTAND	EA	4.000	
19	231584	ICDIG-74ALS05D-SOIC-HEXINVER	EA	1.000	
20	231588-048	ICMEM-27C256-15-PLCCP	EA	1.000	
21	310256-001	RLEM-2P2T05V0178-220SMT	EA	52.000	
22	415183	PCB, 1260-131	EA	1.000	
24	456994	PANEL FRONT, 1260-131B	EA	1.000	
25	600245	JUMPER INSULATED	EA	1.000	
26	602249-116	CON-PCB-PLG160S.1005	EA	1.000	
27	602070	CON-PCB-PLG48PC.1003	EA	1.000	
28	611444	S1C-SBDR-M2.5X0.45X11	EA	2.000	
30	616406	S1MPFL9-M2.5X0.45X14	EA	2.000	
31	617041	NT1HEXM2.5-0.50-STL	EA	2.000	
32	617127	W1S004.202D.020T.115	EA	2.000	
33	921423	LABEL, CE MARKING	EA	1.000	

This page was left intentionally blank.

Chapter 6

OPTIONAL ASSEMBLIES

407664	Connector Kit, 160 Pin Crimp.....	6-3
407408-001	Cable Assy, 160 Pin, 6 ft, 24AWG.....	6-4

This page was left intentionally blank.

RACAL INSTRUMENTS, INC.

Assembly 407664

Connector kit, 160 Pin, Crimp Rev Date 7/30/98 Revision A

#	Component	Description	U/M	Qty Reqd.	REF
1	602258-116	CON-CAB-RCP160C,100S	-E EA	1.000	
2	602258-900	TRMCRP-SNP-U-F26-20G	-E EA	170.000	

1 2 3 4

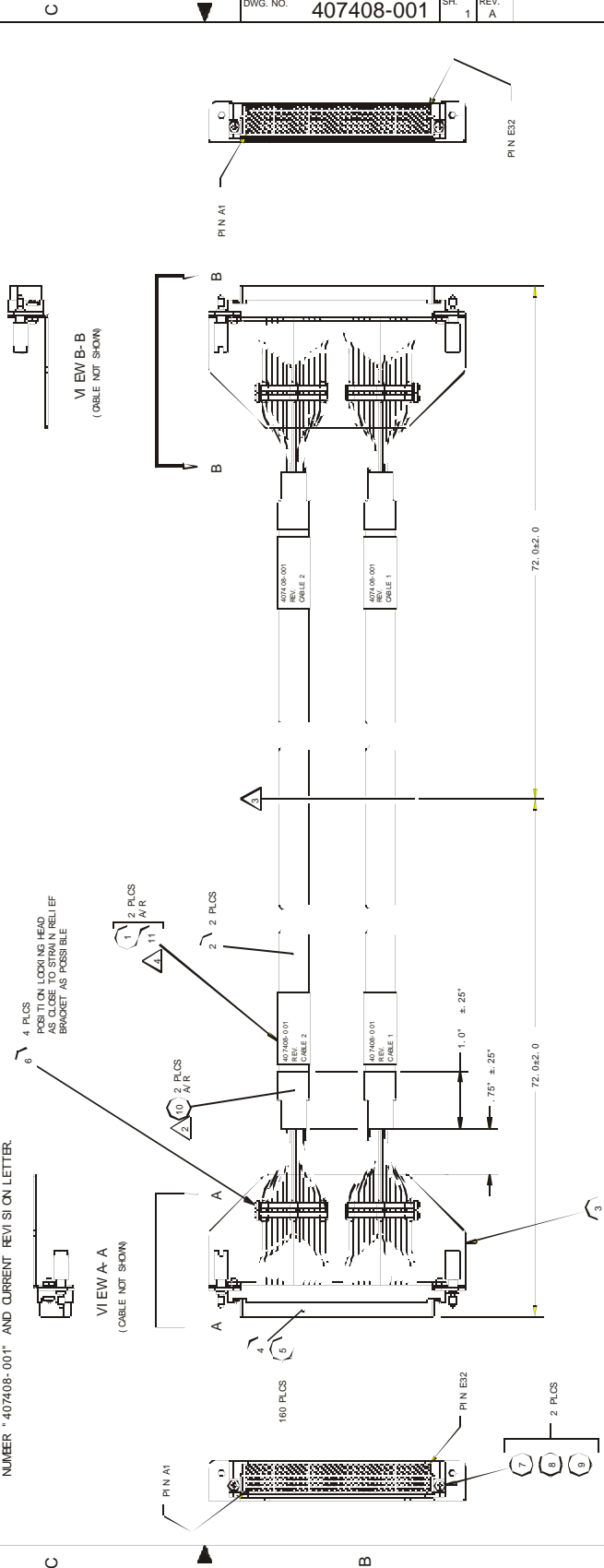
REV'S NOS		DESCRIPTION	DATE	APPROVED
ZONE	REV	DESCRIPTION	DATE	APPROVED
		RELEASED PER DRN NO.		
		REVISED PER DR NO.		
		RELEASED PER DR NO.		
		REVISED PER DR NO.		

REV'S NOS		DESCRIPTION	DATE	APPROVED
ZONE	REV	DESCRIPTION	DATE	APPROVED
		RELEASED PER DRN NO.		
		REVISED PER DR NO.		
		RELEASED PER DR NO.		
		REVISED PER DR NO.		

D C A

NOTES:

- SEE WIRE LIST FOR CONTACT ASSIGNMENTS AND CONNECTIONS.
- TERMNATE CABLE INSULATION AS SHOWN, USING SHRINK TUBING (ITEM 10).
- CABLES ARE TO BE BUILT IN PAIRS FOR EASE OF TESTING TEST CABLE ASSY USING TEST PROCEDURE 951016. AFTER ASSY PASSES TEST, CUT THE CABLE IN HALF, MAKING TWO SEPARATE CABLE ASSEMBLIES.
- IDENTIFY CABLES AS SHOWN USING INDELIBLE BLACK INK ON YELLOW SHRINK TUBING (ITEM 11). COVER WITH CLEAR SHRINK TUBING (ITEM 1) FOR IDENTIFICATION PROTECTION.
- BAG CABLE ASSEMBLY AND IDENTIFY WITH RACAL PART NUMBER 407408-001 AND CURRENT REVISION LETTER.



DWG. NO.	407408-001	SH.	1	REV.	A
----------	------------	-----	---	------	---

RACAL Instruments, Inc.		4, GARDNER, St., Irvine, CA 92718-2025	
TITLE			
CABLE ASSY, 160 PIN			
DATE	REV	DATE	REV
01/79	C	01/79	A
QTY	21793	QTY	407408-001
SCALE	NONE	SCALE	NONE
DATE	1-79	DATE	1-79
BY		BY	
CHECKED		CHECKED	
APPROVED		APPROVED	

1 2 3 4

Chapter 7

PRODUCT SUPPORT

Product Support

Racal Instruments has a complete Service and Parts Department. If you need technical assistance or should it be necessary to return your product for repair or calibration, call 1-800-722-3262. If parts are required to repair the product at your facility, call 1-949-859-8999 and ask for the Parts Department.

When sending your instrument in for repair, complete the form in the back of this manual.

For worldwide support and the office closes to your facility, refer to the Support Offices section on the following page.

Reshipment Instructions

Use the original packing material when returning the 1260-131 to Racal Instruments for calibration or servicing. The original shipping crate and associated packaging material will provide the necessary protection for safe reshipment.

If the original packing material is unavailable, contact Racal Instruments Customer Service for information.

Support Offices

Racal Instruments, Inc.

4 Goodyear St., Irvine, CA 92718-2002

Tel: (800) RACAL-ATE, (949) 859- 8999, FAX: (949) 849-7139

Racal Instruments, Ltd.

480 Bath Road, Slough, Berkshire, SL1 6BE, United Kingdom

Tel: +44 (0) 1628 604455; FAX: +44 (0) 1628 662017

Racal Systems Electronique S.A.

18 Avenue Dutartre, 78150 LeChesnay, France

Tel: +33 (1) 3955 8888; FAX: +33 (1) 3955 6735

Racal Systems Elettronica s.r.l.

Strada 2-Palazzo C4, 20090 Milanofiori Assago, Milan, Italy

Tel: +39 (02) 5750 1796; FAX +39 (02) 5750 1828

Racal Elektronik System GmbH.

Technologie Park Bergisch Gladach Friedrich-Ebert-Strasse

51429 Bergisch Gladbach, Germany

Tel:+49 2204 92220; FAX: +49 2204 21491

Racal Instruments, Ltd.

Unit 5, 25F., Mega Trade Center, No 1, Mei Wan Road,

Tsuen Wan, Hong Kong, PRC

Tel: +852 2405 5500, FAX: +852 2416 4335